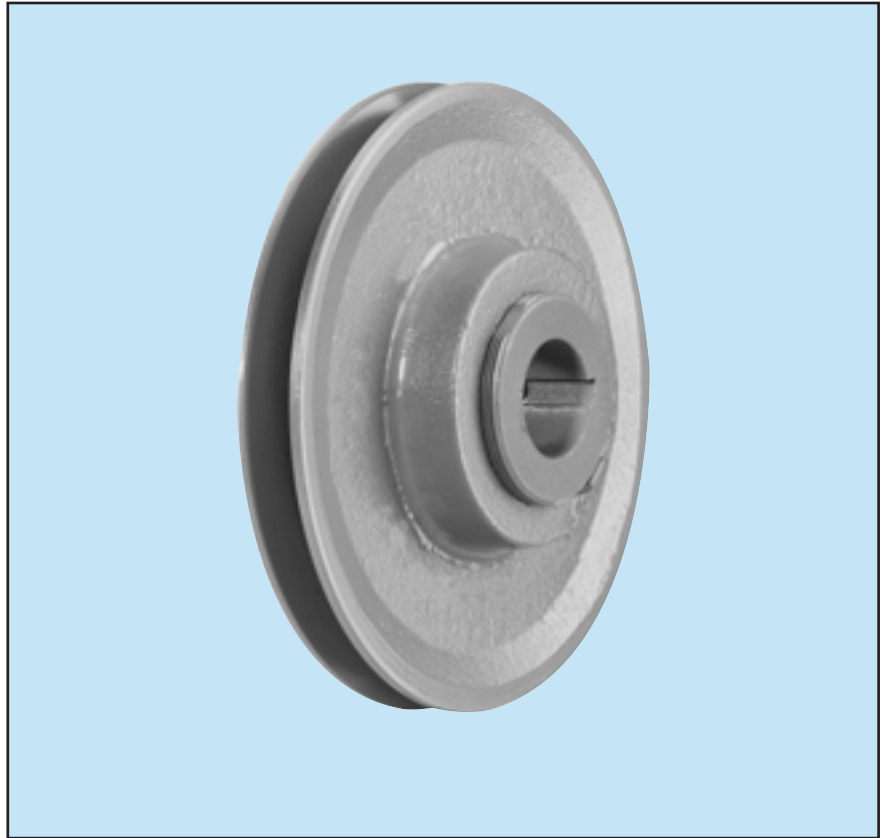


Fixed Bore (Bored-To-Size)

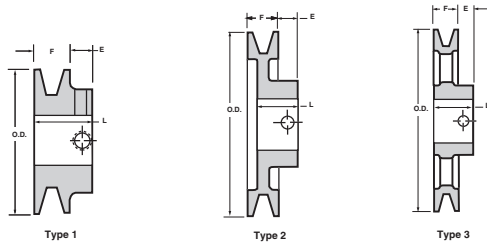
BORED-TO-SIZE PULLEYS

- **RUGGED CAST IRON CONSTRUCTION**
- **POPULAR BORE SIZES**
- **MEETS INDUSTRY STANDARDS**
- **EFFICIENT, ECONOMICAL AND LIGHTWEIGHT**

Carlisle's line of Light Duty (FHP) Bored-to-Size pulleys are available in one and two groove configurations for 3L, 4L, (A) and 5L (B) belts. Made of high-strength cast iron, they combine maximum strength, precision balance and smooth operation with an economical drive system.



Fixed Bore (Bored-To-Size)

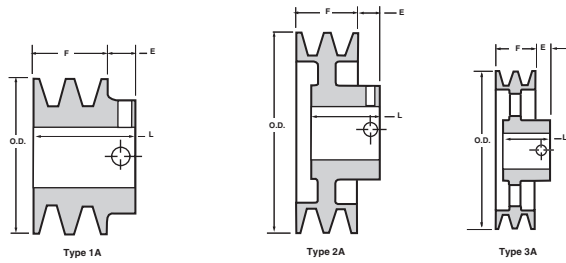


Part No.	Old Part No.	Pitch Diameter		O.D. •	All dimensions are in Inches				Wt. Lbs.	List Price
		3L or O	4L or A		Stock Bores	Type	E	F		

A (3L-4L Combination)
Single Groove — Bored -To-Size Sheaves

AK15-	1A15F	—	1.30	1.55	1/2, 5/8	1	7/16	11/16	1-1/8	0.3	\$7.89
AK16-	—	—	1.40	1.65	1/2, 5/8	1	7/16	11/16	1-1/8	0.4	8.38
AK17-	1A18F	—	1.50	1.75	1/2, 5/8, 3/4	1	7/16	21/32	15/16	0.2	8.87
AK18-	—	—	1.60	1.85	5/8	1	7/16	11/16	1-1/8	0.4	8.87
AK19-	—	—	1.70	1.95	1/2, 5/8, 3/4, 7/8	1	7/16	11/16	1-1/8	0.5	8.87
AK20-	1A20F	1.46	1.80	2.05	1/2, 5/8, 3/4	1	7/16	21/32	15/16	0.3	8.87
AK21-	—	1.56	1.90	2.15	1/2, 5/8, 3/4	1	7/16	21/32	15/16	0.4	9.25
AK22-	—	1.66	2.00	2.25	1/2, 5/8, 3/4, 7/8	1	7/16	21/32	15/16	0.5	9.25
AK23-	1A23F	1.76	2.10	2.35	1/2, 5/8, 3/4	1	7/16	21/32	15/16	0.5	9.85
AK24-	—	1.86	2.20	2.45	1/2, 5/8, 3/4, 7/8, 1	1	7/16	11/16	1-1/8	0.9	10.04
AK25-	1A25F	1.96	2.30	2.55	1/2, 5/8, 3/4, 7/8	2	7/16	21/32	15/16	0.5	10.24
AK26-	—	2.06	2.40	2.65	1/2, 5/8, 3/4	2	7/16	21/32	15/16	0.5	10.40
AK27-	—	2.16	2.50	2.75	1/2, 5/8, 3/4, 1	2	7/16	21/32	15/16	0.6	10.70
AK28-	1A28F	2.26	2.60	2.85	1/2, 5/8, 3/4, 7/8	2	7/16	21/32	15/16	0.7	11.73
AK30-	1A30F	2.46	2.80	3.05	1/2, 5/8, 3/4, 7/8, 1	2	7/16	21/32	15/16	0.7	12.67
AK32-	1A33F	2.66	3.00	3.25	1/2, 5/8, 3/4, 7/8, 1	2	7/16	21/32	15/16	0.7	13.05
AK34-	—	2.86	3.20	3.45	1/2, 5/8, 3/4, 7/8, 1	2	7/16	21/32	15/16	0.9	13.13
AK35-	1A35F	2.96	3.30	3.55	1/2, 5/8, 3/4, 7/8, 1	1	7/16	11/16	1-1/8	1.7	17.70
AK39-	1A38F	3.16	3.50	3.75	1/2, 5/8, 3/4, 7/8, 15/16, 1	2	15/32	3/4	1-5/32	1.4	17.70
AK41-	1A40F	3.36	3.70	3.95	1/2, 5/8, 3/4, 7/8, 15/16, 1, 1-1/8	2	15/32	3/4	1-5/32	1.5	20.45
AK44-	1A43F	3.66	4.00	4.25	1/2, 5/8, 3/4, 7/8, 15/16, 1, 1-1/8	3	15/32	3/4	1-5/32	1.5	21.02
AK46-	1A45F	3.86	4.20	4.45	1/2, 5/8, 3/4, 7/8, 15/16, 1, 1-1/8	3	15/32	3/4	1-5/32	1.5	21.92
AK49-	1A48F	4.16	4.50	4.75	1/2, 5/8, 3/4, 7/8, 15/16, 1, 1-1/8	3	15/32	3/4	1-5/32	1.7	22.13
AK51-	1A50F	4.36	4.70	4.95	1/2, 5/8, 3/4, 7/8, 1, 1-1/8	3	15/32	3/4	1-5/32	1.7	23.37
AK54-	1A53F	4.66	5.00	5.25	1/2, 5/8, 3/4, 7/8, 15/16, 1, 1-1/8, 1-3/16	3	15/32	3/4	1-5/32	1.8	23.79
AK56-	1A55F	4.86	5.20	5.45	1/2, 5/8, 3/4, 7/8, 15/16, 1, 1-1/8, 1-3/16	3	15/32	3/4	1-5/32	1.9	25.54
AK59-	—	5.16	5.50	5.75	1/2, 5/8, 3/4, 7/8, 15/16, 1, 1-1/8, 1-3/16	3	15/32	3/4	1-5/32	2.0	27.03
AK61-	1A60F	5.36	5.70	5.95	1/2, 5/8, 3/4, 7/8, 15/16, 1, 1-1/8, 1-3/16	3	15/32	3/4	1-5/32	2.1	27.25
AK64-	1A63F	5.66	6.00	6.25	1/2, 5/8, 3/4, 7/8, 15/16, 1, 1-1/8, 1-3/16	3	15/32	3/4	1-5/32	2.2	27.98
AK66-	—	5.86	6.20	6.45	5/8, 3/4, 1, 1-1/8	3	15/32	3/4	1-5/32	2.3	29.08
AK69-	—	6.16	6.50	6.75	3/4, 1, 1-1/8	3	23/32	3/4	1-15/32	3.5	31.64
AK71-	—	6.36	6.70	6.95	1/2, 5/8, 3/4, 1, 1-1/8, 1-7/16	3	23/32	3/4	1-15/32	3.8	32.96
AK74-	1A73F	6.66	7.00	7.25	1/2, 5/8, 3/4, 15/16, 1, 1-1/8, 1-3/16, 1-1/4, 1-7/16	3	23/32	3/4	1-15/32	3.4	33.09
AK79-	—	7.16	7.50	7.75	3/4, 1, 1-1/8, 1-7/16	3	23/32	3/4	1-15/32	4.0	37.82
AK81-	1A80F	7.36	7.70	7.95	5/8, 3/4, 1	3	7/16	11/16	1-1/8	4.0	38.80
AK84-	1A83F	7.66	8.00	8.25	1/2, 5/8, 3/4, 15/16, 1, 1-3/16, 1-7/16	3	23/32	3/4	1-15/32	3.8	40.47
AK89-	—	8.16	8.50	8.75	3/4, 1, 1-1/8, 1-7/16	3	23/32	3/4	1-15/32	4.3	42.86
AK91-	1A90F	8.36	8.70	8.95	3/4, 1	3	7/16	11/16	1-1/8	4.8	43.34
AK94-	1A93F	8.66	9.00	9.25	1/2, 5/8, 3/4, 15/16, 1, 1-3/16, 1-1/4, 1-7/16	3	23/32	3/4	1-15/32	4.5	44.05
AK99-	—	9.16	9.50	9.75	3/4, 1, 1-7/16	3	23/32	3/4	1-15/32	5.3	47.12
AK104-	1A103F	9.66	10.00	10.25	5/8, 3/4, 1, 1-3/16, 1-1/4, 1-3/8, 1-7/16	3	23/32	3/4	1-15/32	5.1	48.01
AK109-	—	10.16	10.50	10.75	3/4, 1, 1-3/8, 1-7/16	3	23/32	3/4	1-15/32	5.8	51.47
AK114-	—	10.66	11.00	11.25	3/4, 1, 1-3/16, 1-7/16	3	23/32	3/4	1-15/32	5.6	54.07
AK124-	1A123F	11.66	12.00	12.25	5/8, 3/4, 1, 1-3/16, 1-1/4, 1-7/16	3	23/32	3/4	1-15/32	6.5	60.34
AK134-	—	12.66	13.00	13.25	3/4, 1, 1-3/16, 1-3/8, 1-7/16	3	23/32	3/4	1-15/32	7.5	72.45
AK144-	—	13.66	14.00	14.25	3/4, 1, 1-3/16, 1-7/16	3	23/32	3/4	1-15/32	8.5	80.38
AK154-	—	14.66	15.00	15.25	3/4, 1, 1-3/16, 1-7/16	3	23/32	3/4	1-15/32	9.8	90.61
AK184-	—	17.66	18.00	18.25	3/4, 1, 1-3/16, 1-7/16	3	23/32	3/4	1-15/32	12.1	114.67

Fixed Bore (Bored-To-Size) (Continued)



Part No.	Old Part No.	Pitch Diameter		O.D.	All dimensions are in Inches				Wt. Lbs.	List Price
		3L or O	4L or A		Stock Bores	Type	E	F		

A (3L-4L Combination)
Two-Groove — Bored -To-Size Sheaves

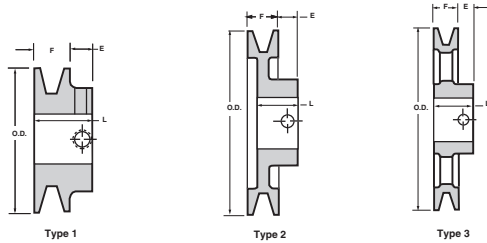
2AK20-	2A20F	1.46	1.80	2.05	1/2, 5/8, 3/4	1A	15/32	1-3/8	1-21/32	0.8	\$22.00
2AK21-	—	1.56	1.90	2.15	1/2, 5/8, 3/4	1A	15/32	1-3/8	1-21/32	0.8	22.00
2AK22-	—	1.66	2.00	2.25	1/2, 5/8, 3/4, 7/8	1A	15/32	1-3/8	1-21/32	0.9	22.00
2AK23-	2A23F	1.76	2.10	2.35	5/8, 3/4, 7/8, 1	1A	15/32	1-3/8	1-21/32	1.1	24.22
2AK25-	2A25F	1.96	2.30	2.55	5/8, 3/4, 7/8, 1	1A	15/32	1-3/8	1-21/32	1.3	24.39
2AK26-	—	2.06	2.40	2.65	5/8, 3/4, 7/8	1A	15/32	1-3/8	1-21/32	1.4	26.78
2AK27-	—	2.16	2.50	2.75	5/8, 3/4, 7/8, 1	1A	15/32	1-3/8	1-21/32	1.5	27.80
2AK28-	2A28F	2.26	2.60	2.85	5/8, 3/4, 7/8, 1	1A	15/32	1-3/8	1-21/32	1.8	29.51
2AK30-	2A30F	2.46	2.80	3.05	1/2, 5/8, 3/4, 7/8, 1, 1-1/8	1A	15/32	1-3/8	1-21/32	1.8	32.75
2AK32-	2A33F	2.66	3.00	3.25	5/8, 3/4, 7/8, 1, 1-1/8	1A	15/32	1-3/8	1-21/32	2.1	36.85
2AK34-	2A35F	2.86	3.20	3.45	5/8, 3/4, 7/8, 1, 1-1/8	1A	15/32	1-3/8	1-21/32	2.3	38.04
2AK39-	2A38F	3.16	3.50	3.75	5/8, 3/4, 7/8, 1, 1-1/8	2A	15/32	1-3/8	1-11/32	2.6	38.72
2AK41-	2A40F	3.36	3.70	3.95	5/8, 3/4, 7/8, 1, 1-1/8	2A	15/32	1-3/8	1-11/32	2.9	43.02
2AK44-	2A43F	3.66	4.00	4.25	5/8, 3/4, 7/8, 1, 1-1/8	2A	15/32	1-3/8	1-11/32	3.0	44.35
2AK46-	2A45F	3.86	4.20	4.45	5/8, 7/8, 1, 1-1/8	2A	15/32	1-3/8	1-11/32	3.1	46.18
2AK49-	2A48F	4.16	4.50	4.75	3/4, 7/8, 1, 1-1/8, 1-3/8	2A	15/32	1-3/8	1-11/32	3.6	47.33
2AK51-	2A50F	4.36	4.70	4.95	3/4, 7/8, 1, 1-1/8, 1-3/8	2A	15/32	1-3/8	1-11/32	3.8	48.44
2AK54-	2A53F	4.66	5.00	5.25	5/8, 3/4, 7/8, 1, 1-1/8, 1-3/8	3A	15/32	1-3/8	1-11/32	3.3	48.96
2AK56-	2A55F	4.86	5.20	5.45	5/8, 3/4, 1, 1-1/8, 1-3/8	3A	15/32	1-3/8	1-11/32	3.4	49.80
2AK59-	2A58F	5.16	5.50	5.75	1, 1-1/8, 1-3/8,	3A	15/32	1-3/8	1-11/32	3.5	53.86
2AK61-	2A60F	5.36	5.70	5.95	3/4, 7/8, 1, 1-1/8, 1-3/8	3A	15/32	1-3/8	1-11/32	3.6	55.52
2AK64-	2A63F	5.66	6.00	6.25	3/4, 1, 1-1/8, 1-3/16, 1-3/8, 1-7/16	3A	11/32	1-3/8	1-19/32	4.8	58.07
2AK74-	2A73F	6.66	7.00	7.25	3/4, 1, 1-1/8, 1-3/16, 1-3/8, 1-7/16	3A	11/32	1-3/8	1-19/32	5.6	66.05
2AK84-	2A83F	7.66	8.00	8.25	3/4, 15/16, 1, 1-1/8, 1-3/8, 1-7/16	3A	11/32	1-3/8	1-19/32	6.4	72.37
2AK94-	2A93F	8.66	9.00	9.25	3/4, 1, 1-1/8, 1-3/16, 1-3/8, 1-7/16	3A	11/32	1-3/8	1-19/32	7.3	78.67
2AK104-	2A103F	9.66	10.00	10.25	3/4, 15/16, 1, 1-3/16, 1-7/16	3A	11/32	1-3/8	1-19/32	8.1	84.56
2AK114-	2A113F	10.66	11.00	11.25	1, 1-3/16, 1-3/8, 1-7/16	3A	11/32	1-3/8	1-19/32	9.0	91.76
2AK124-	2A123F	11.66	12.00	12.25	1, 1-3/16, 1-7/16	3A	11/32	1-3/8	1-19/32	9.8	100.51
2AK134-	2A133F	12.66	13.00	13.25	1-3/16, 1-7/16	3A	11/32	1-3/8	1-19/32	12.3	118.37
2AK144-	2A143F	13.66	14.00	14.25	1, 1-7/16	3A	11/32	1-3/8	1-19/32	13.9	124.99
2AK154-	2A153F	14.66	15.00	15.25	1-3/16, 1-7/16	3A	11/32	1-3/8	1-19/32	14.3	144.22
2AK184-	2A183F	17.66	18.00	18.25	1-3/16, 1-7/16	3A	11/32	1-3/8	1-19/32	17.4	181.74

• P.D. for A same as O.D. — P.D. for 3L = Pitch diameter + 0.25

Standard Keyseat Dimensions (AK & 2AK)

Shaft Dia.	Width	Depth
1/2		no keyseat
5/8 - 7/8	3/16	3/32
15/16 - 1-1/4	1/4	1/8
1-5/16 - 1-3/8	5/16	5/32
1-7/16 - 1-3/4	3/8	3/16

Fixed Bore (Bored-To-Size)



Part No.	Old Part No.	Pitch Diameter		O.D. •	Stock Bores	Dimensions			Wt. Lbs.	List Price
		4L or O	5L or B			Type	E	F		

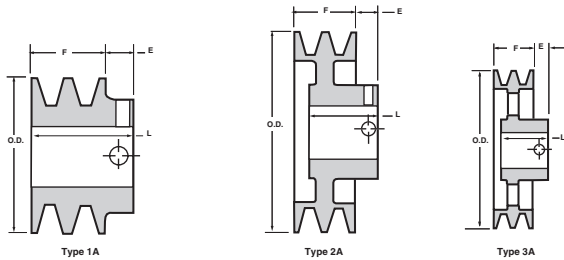
**B (4L-5L Combination)
Single Groove — Bored -To-Size Sheaves**

BK19-	—	—	1.70	1.95	5/8, 3/4	1	7/16	7/8	1-5/16	0.7	\$12.41
BK22-	—	—	2.00	2.25	1/2, 5/8, 3/4, 7/8, 1	1	7/16	7/8	1-5/16	0.9	12.41
BK23-	1B23F	—	2.10	2.35	5/8	1	7/16	7/8	1-5/16	0.9	12.41
BK24-	—	1.80	2.20	2.45	1/2, 5/8, 3/4, 7/8, 1	1	13/32	13/16	1-1/16	0.4	12.41
BK25-	1B25F	1.90	2.30	2.55	1/2, 5/8, 3/4, 7/8	1	13/32	13/16	1-1/16	0.5	12.79
BK26-	—	2.00	2.40	2.65	1/2, 5/8, 3/4, 7/8	1	13/32	13/16	1-1/16	0.6	13.52
BK27-	—	2.10	2.50	2.75	1/2, 5/8, 3/4, 7/8, 1-1/8	2	13/32	13/16	1-1/16	0.6	14.08
BK28-	—	2.20	2.60	2.95	1/2, 5/8, 3/4, 7/8, 1, 1-1/8	2	13/32	13/16	1-1/16	0.8	14.08
BK30-	1B30F	2.40	2.80	3.15	1/2, 5/8, 3/4, 7/8, 1, 1-1/8	2	13/32	13/16	1-1/16	0.8	14.46
BK32-	—	2.60	3.00	3.35	1/2, 5/8, 3/4, 7/8, 1	2	13/32	13/16	1-5/32	0.8	15.69
BK34-	—	2.80	3.20	3.55	1/2, 5/8, 3/4, 7/8, 1, 1-1/8	2	13/32	7/8	1-5/32	1.3	19.27
BK36-	1B38F	3.00	3.40	3.75	1/2, 5/8, 3/4, 7/8, 1, 1-1/8	2	13/32	7/8	1-5/32	1.5	21.02
BK40-	1B40F	3.20	3.60	3.95	1/2, 5/8, 3/4, 7/8, 1, 1-1/8	2	13/32	7/8	1-5/32	1.5	21.92
BK45-	—	3.50	3.90	4.25	1/2, 5/8, 3/4, 7/8, 1, 1-1/8	2	13/32	7/8	1-5/32	1.8	22.43
BK46-	1B44F	3.60	4.00	4.35	7/8	1	7/16	7/8	1-5/16	2.7	24.22
BK47-	1B45F	3.70	4.10	4.45	1/2, 5/8, 3/4, 7/8, 1, 1-1/8	2	13/32	7/8	1-5/32	1.9	24.22
BK48-	1B46F	3.80	4.20	4.55	5/8, 3/4, 7/8, 1-1/8	1	7/16	7/8	1-5/16	3.0	24.22
BK50-	1B48F	4.00	4.40	4.75	1/2, 5/8, 3/4, 7/8, 15/16, 1, 1-1/8	3	13/32	7/8	1-5/32	2.0	24.56
BK52-	1B50F	4.20	4.60	4.95	1/2, 5/8, 3/4, 7/8, 1, 1-1/8	3	13/32	7/8	1-5/32	2.0	24.64
BK55-	—	4.50	4.90	5.25	1/2, 5/8, 3/4, 7/8, 1, 1-1/8, 1-3/16	3	13/32	7/8	1-5/32	2.2	26.09
BK57-	—	4.70	5.10	5.45	5/8, 3/4, 7/8, 15/16, 1, 1-1/8	3	13/32	7/8	1-5/32	2.3	27.25
BK60-	1B58F	5.00	5.40	5.75	1/2, 5/8, 3/4, 7/8, 1, 1-1/8, 1-3/16,	3	13/32	7/8	1-5/32	2.3	27.98
BK62-	1B60F	5.20	5.60	5.95	1/2, 5/8, 3/4, 7/8, 15/16, 1, 1-1/8, 1-3/16	3	13/32	7/8	1-5/32	2.4	28.18
BK65-	—	5.50	5.90	6.25	5/8, 3/4, 1, 1-1/8	3	13/32	7/8	1-5/32	2.7	31.60
BK67-	—	5.70	6.10	6.45	5/8, 3/4, 1, 1-1/8	3	13/32	7/8	1-5/32	2.8	32.79
BK70-	1B68F	6.00	6.40	6.75	5/8, 3/4, 15/16, 1, 1-1/8, 1-3/16, 1-7/16	3	21/32	7/8	1-5/32	3.3	36.50
BK72-	1B70F	6.20	6.60	6.95	3/4, 1, 1-1/8, 1-3/8, 1-7/16	3	21/32	7/8	1-5/32	3.9	38.76
BK75-	—	6.50	6.90	7.25	3/4, 1, 1-1/8, 1-7/16	3	21/32	7/8	1-5/32	3.9	39.53
BK77-	—	6.70	7.10	7.45	3/4, 1, 1-1/8, 1-3/8, 1-7/16	3	21/32	7/8	1-5/32	4.1	39.87
BK80-	1B78F	7.00	7.40	7.75	5/8, 3/4, 7/8, 1, 1-1/8, 1-3/16, 1-1/4, 1-3/8, 1-7/16	3	21/32	7/8	1-5/32	4.4	40.47
BK85-	—	7.50	7.90	8.25	3/4, 1, 1-1/8, 1-3/16, 1-3/8, 1-7/16	3	21/32	7/8	1-5/32	5.0	45.58
BK90-	1B88F	8.00	8.40	8.75	3/4, 7/8, 15/16, 1, 1-1/8, 1-3/16, 1-3/8, 1-7/16	3	21/32	7/8	1-5/32	5.0	46.91
BK95-	—	8.50	8.90	9.25	3/4, 1, 1-1/8, 1-3/8, 1-7/16	3	21/32	7/8	1-5/32	5.4	50.10
BK100-	1B98F	9.00	9.40	9.75	3/4, 7/8, 1, 1-1/8, 1-3/16, 1-1/4, 1-3/8, 1-7/16	3	21/32	7/8	1-5/32	5.6	51.81
BK105-	—	9.50	9.90	10.25	1, 1-3/8, 1-7/16	3	21/32	7/8	1-5/32	5.8	56.72
BK110-	1B108F	10.00	10.40	10.75	3/4, 1, 1-1/8, 1-3/16, 1-3/8, 1-7/16	3	21/32	7/8	1-5/32	6.4	59.57
BK115-	—	10.50	10.90	11.25	1, 1-3/8, 1-7/16	3	21/32	7/8	1-5/32	6.9	61.07
BK120-	1B118F	11.00	11.40	11.75	3/4, 1, 1-3/16, 1-3/8, 1-7/16	3	21/32	7/8	1-5/32	7.4	63.62
BK130-	1B128F	12.00	12.40	12.75	3/4, 1, 1-1/8, 1-3/16, 1-7/16	3	21/32	7/8	1-5/32	8.4	71.13
BK140-	—	13.00	13.40	13.75	3/4, 1, 1-3/16, 1-7/16	3	21/32	7/8	1-5/32	9.4	85.41
BK160-	—	15.00	15.40	15.75	1, 1-1/8, 1-3/16, 1-1/4, 1-7/16	3	21/32	7/8	1-5/32	11.4	111.09
BK190-	—	18.00	18.40	18.75	1, 1-3/16, 1-1/4, 1-7/16	3	21/32	7/8	1-5/32	13.4	127.93

* Contact Carlisle for price and availability

• P.D. for A belts = Pitch diameter + 0.38 P.D. for B belts = Pitch diameter + 0.413

Fixed Bore (Bored-To-Size) (Continued)



Part No.	Old Part No.	Pitch Diameter		O.D.	Stock Bores	Dimensions			Wt. Lbs.	List Price
		4L or O	5L or B			Type	E	F		

B (4L-5L Combination) Two-Groove — Bored -To-Size Sheaves

2BK23-	—	1.70	2.10	2.35	5/8, 7/8	1A	1/2	1-5/8	2-1/8	1.3	\$31.04
2BK25-	2B25F	1.90	2.30	2.55	1/2, 5/8, 3/4, 7/8	1A	15/32	1-5/8	1-31/32	1.3	31.04
2BK26-	—	2.00	2.40	2.65	5/8, 7/8, 1-1/8	1A	1/2	1-5/8	2-1/8	1.6	31.04
2BK27-	—	2.10	2.50	2.75	1/2, 5/8, 3/4, 7/8, 1	1A	15/32	1-3/4	1-31/32	1.6	32.06
2BK28-	2B30F	2.20	2.60	2.95	1/2, 5/8, 3/4, 7/8, 1, 1-1/8	1A	15/32	1-5/8	1-31/32	1.9	34.50
2BK30-	—	2.40	2.80	3.15	1/2, 5/8, 3/4, 7/8, 1, 1-1/8	1A	15/32	1-5/8	1-31/32	2.3	36.71
2BK32-	—	2.60	3.00	3.35	5/8, 7/8, 1, 1-1/8	1A	15/32	1-5/8	1-31/32	2.6	38.38
2BK34-	—	2.80	3.20	3.55	5/8, 3/4, 7/8, 1, 1-1/8	1A	15/32	1-5/8	1-31/32	2.8	40.04
2BK36-	2B38F	3.00	3.40	3.75	3/4, 7/8, 1, 1-1/8, 1-3/8	1A	15/32	1-5/8	1-31/32	3.3	41.15
2BK40-	2B40F	3.20	3.60	3.95	5/8, 3/4, 7/8, 1, 1-1/8	2A	15/32	1-3/4	1-15/32	3.3	43.02
2BK45-	2B43F	3.50	3.90	4.25	1, 1-1/8, 1-3/8	2A	15/32	1-5/8	1-15/32	3.3	46.35
2BK47-	2B45F	3.70	4.10	4.45	7/8, 1, 1-1/8	2A	15/32	1-3/4	1-15/32	3.7	46.91
2BK50-	2B48F	4.00	4.40	4.75	3/4, 1, 1-1/8, 1-3/8	2A	15/32	1-3/4	1-15/32	4.1	49.72
2BK52-	2B50F	4.20	4.60	4.95	7/8, 1, 1-1/8, 1-3/8	2A	15/32	1-3/4	1-15/32	4.5	51.05
2BK55-	2B53F	4.50	4.90	5.25	1-1/8, 1-3/8	2A	15/32	1-3/4	1-15/32	4.5	53.69
2BK57-	2B55F	4.70	5.10	5.45	1-1/8, 1-3/8	2A	15/32	1-3/4	1-15/32	5.1	55.22
2BK60-	2B58F	5.00	5.40	5.75	3/4, 7/8, 1, 1-1/8, 1-3/8	3A	15/32	1-3/4	1-15/32	4.9	57.69
2BK62-	2B60F	5.20	5.60	5.95	1, 1-1/8, 1-3/8	3A	15/32	1-3/4	1-15/32	4.8	59.60
2BK65-	2B63F	5.50	5.90	6.25	1, 1-1/8, 1-3/8	3A	15/32	1-3/4	1-15/32	5.0	62.43
2BK67-	2B65F	5.70	6.10	6.45	1, 1-1/8, 1-3/8	3A	15/32	1-3/4	1-15/32	5.0	65.97
2BK70-	2B68F	6.00	6.40	6.75	3/4, 1, 1-1/8, 1-3/16, 1-3/8, 1-7/16	3A	11/32	1-3/4	1-19/32	6.6	73.22
2BK80-	2B78F	7.00	7.40	7.75	3/4, 1, 1-1/8, 1-3/16, 1-1/4, 1-3/8, 1-7/16	3A	11/32	1-3/4	1-19/32	7.2	77.74
2BK90-	2B88F	8.00	8.40	8.75	3/4, 1, 1-1/8, 1-3/16, 1-1/4, 1-3/8, 1-7/16	3A	11/32	1-3/4	1-19/32	8.4	80.38
2BK100-	2B98F	9.00	9.40	9.75	3/4, 1, 1-1/8, 1-3/16, 1-1/4, 1-3/8, 1-7/16	3A	11/32	1-3/4	1-19/32	9.4	94.54
2BK110-	2B108F	10.00	10.40	10.75	1, 1-3/16, 1-7/16	3A	11/32	1-3/4	1-19/32	10.4	100.43
2BK120-	2B118F	11.00	11.40	11.75	1, 1-3/16, 1-7/16	3A	11/32	1-3/4	1-19/32	11.8	108.74
2BK130-	2B128F	12.00	12.40	12.75	1, 1-3/16, 1-7/16	3A	11/32	1-3/4	1-19/32	14.9	122.17
2BK140-	2B138F	13.00	13.40	13.75	1, 1-3/16, 1-7/16	3A	11/32	1-3/4	1-19/32	16.3	128.23
2BK160-	2B158F	15.00	15.40	15.75	1, 1-3/16, 1-7/16	3A	11/32	1-3/4	1-19/32	18.0	152.70
2BK190-	2B188F	18.00	18.40	18.75	1-3/16, 1-7/16	3A	11/32	1-3/4	1-19/32	23.3	195.89

* Contact Carlisle for price and availability

Standard Keyseat Dimensions (BK & 2BK)

Shaft Dia.	Width	Depth
1/2		no keyseat
5/8 - 7/8	3/16	3/32
15/16 - 1-1/4	1/4	1/8
1-5/16 - 1-3/8	5/16	5/32
1-7/16 - 1-3/4	3/8	3/16