

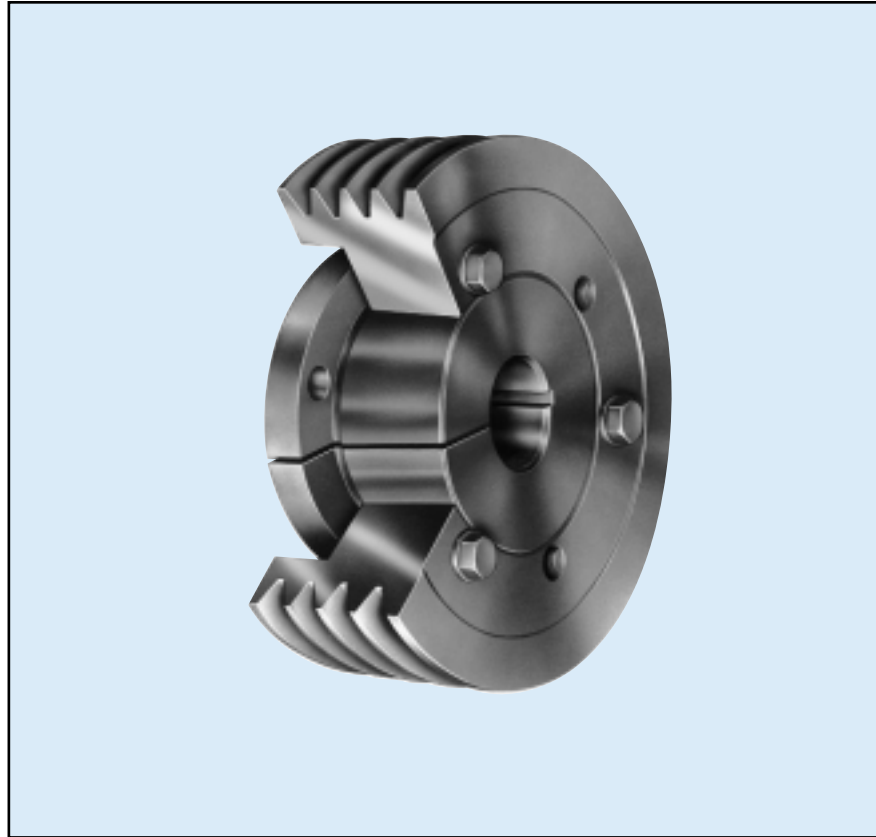
## Power-Wedge QD Pulleys

### STOCK SIZES

Power-Wedge QD Pulleys are specially designed to meet the requirements of Power-Wedge multiple V-Belt drives. These drives make possible lower cost, lighter weight, more compact drives. Because drive widths are reduced, bearing loads are lessened, smaller diameter pulleys and shorter center distances are practical.

#### For Use With:

3V, 3VX, 5V, 5VX, 8V, 8VX  
Power-Wedge V-Belts



## Power-Wedge QD Pulleys

3V Power-Wedge QD Sheaves for use with 3V and 3VX Power-Wedge belts

Part Number	Outside Diameter	POWER-WEDGE QD SHEAVES Weight Less	
		bushing (lbs)	Bushing

1 Groove Face Width (F) = 11/16" for 2.65" through 8.0" 3/4" for 10.6"; and 13/16" for 14.0" and 19.0"

1-3V22	2.20	0.6	JA
1-3V23	2.35	0.7	JA
1-3V25	2.50	0.8	JA
1-3V26	2.65	0.5	JA
1-3V28	2.80	0.6	JA
1-3V30	3.00	0.8	JA
1-3V31	3.15	0.9	JA
1-3V33	3.35	1.1	JA
1-3V36	3.65	1.3	SH
1-3V41	4.12	1.7	SH
1-3V45	4.50	2.1	SH
1-3V47	4.75	2.5	SH
1-3V50	5.00	2.8	SH
1-3V53	5.30	3.2	SH
1-3V56	5.60	3.2	SH
1-3V60	6.00	3.5	SH
1-3V65	6.50	3.9	SH
1-3V69	6.90	3.9	SH
1-3V80	8.00	5.2	SDS
1-3V106	10.60	8.0	SDS
1-3V140	14.00	13.5	SK
1-3V190	19.00	21.0	SK

2 Grooves Face Width (F) = 1-3/32"

2-3V22	2.20	0.8	JA
2-3V23	2.35	0.9	JA
2-3V25	2.50	1.0	JA
2-3V26	2.65	1.0	JA
2-3V28	2.80	1.2	JA
2-3V30	3.00	1.4	JA
2-3V31	3.15	1.6	JA
2-3V33	3.35	1.7	SH
2-3V36	3.65	1.8	SH
2-3V41	4.12	2.2	SH
2-3V45	4.50	2.7	SH
2-3V47	4.75	3.1	SH
2-3V50	5.00	3.4	SH
2-3V53	5.30	4.0	SH
2-3V56	5.60	3.6	SH
2-3V60	6.00	4.4	SH
2-3V65	6.50	5.0	SDS
2-3V69	6.90	5.5	SDS
2-3V80	8.00	6.6	SDS
2-3V106	10.60	11.4	SK
2-3V140	14.00	16.0	SK
2-3V190	19.00	23.0	SK
2-3V250	25.00	33.0	SF

3V Power-Wedge QD Sheaves for use with 3V and 3VX Power-Wedge belts

Part Number	Outside Diameter	POWER-WEDGE QD SHEAVES Weight Less	
		bushing (lbs)	Bushing

3 Grooves Face Width (F) = 1-1/2"

3-3V25	2.50	1.2	JA
3-3V26	2.65	1.2	JA
3-3V28	2.80	1.4	JA
3-3V30	3.00	1.6	SH
3-3V31	3.15	1.9	SH
3-3V33	3.35	2.0	SH
3-3V36	3.65	2.4	SH
3-3V41	4.12	2.6	SH
3-3V45	4.50	3.0	SDS
3-3V47	4.75	3.5	SDS
3-3V50	5.00	3.9	SDS
3-3V53	5.30	4.4	SDS
3-3V56	5.60	4.9	SDS
3-3V60	6.00	5.8	SDS
3-3V65	6.50	6.1	SDS
3-3V69	6.90	5.8	SDS
3-3V80	8.00	10.3	SK
3-3V106	10.60	13.4	SK
3-3V140	14.00	18.0	SK
3-3V190	19.00	29.0	SF
3-3V250	25.00	45.5	SF
3-3V335	33.50	75.5	SF

4 Grooves Face Width (F) = 1-29/32"

4-3V26	2.65	1.5	JA
4-3V28	2.80	1.8	JA
4-3V30	3.00	1.9	SH
4-3V31	3.15	2.2	SH
4-3V33	3.35	2.3	SH
4-3V36	3.65	2.9	SH
4-3V41	4.12	3.0	SH
4-3V45	4.50	3.4	SDS
4-3V47	4.75	4.2	SDS
4-3V50	5.00	4.5	SDS
4-3V53	5.30	5.1	SDS
4-3V56	5.60	5.6	SDS
4-3V60	6.00	7.6	SK
4-3V65	6.50	9.4	SK
4-3V69	6.90	10.9	SK
4-3V80	8.00	11.6	SK
4-3V106	10.60	17.0	SK
4-3V140	14.00	21.0	SK
4-3V190	19.00	32.0	SF
4-3V250	25.00	49.2	SF
4-3V335	33.50	79.6	E

5 Grooves Face Width (F) = 2-5/16"

5-3V47	4.75	4.5	SDS
5-3V50	5.00	5.3	SDS
5-3V53	5.30	5.8	SK

## Power-Wedge QD Pulleys

3V Power-Wedge QD Sheaves for use with 3V and 3VX Power-Wedge belts

Part Number	Outside Diameter	POWER-WEDGE QD SHEAVES	
		Weight Less bushing (lbs)	Bushing

5 Grooves Face Width (F) = 2-5/16"

5-3V56	5.60	7.0	SK
5-3V60	6.00	8.3	SK
5-3V65	6.50	10.3	SK
5-3V69	6.90	11.8	SK
5-3V80	8.00	13.2	SK
5-3V106	10.60	15.8	SK
5-3V140	14.00	25.0	SF
5-3V190	19.00	41.0	SF
5-3V250	25.00	62.2	E
5-3V335	33.50	97.5	E

6 Grooves Face Width (F) = 2-23/32"

6-3V47	4.75	6.3	SK
6-3V50	5.00	6.5	SK
6-3V53	5.30	6.7	SK
6-3V56	5.60	7.9	SK
6-3V60	6.00	9.4	SK
6-3V65	6.50	11.1	SK
6-3V69	6.90	12.5	SK
6-3V80	8.00	13.8	SK
6-3V106	10.60	22.8	SF
6-3V140	14.00	27.0	SF
6-3V190	19.00	45.0	E
6-3V250	25.00	66.5	E
6-3V335	33.50	105.0	E

8 Grooves Face Width (F) = 3-17/32"

8-3V47	4.75	6.2	SK
8-3V50	5.00	7.4	SK
8-3V53	5.30	8.3	SK
8-3V56	5.60	9.1	SK
8-3V60	6.00	10.7	SK
8-3V65	6.50	12.9	SK
8-3V69	6.90	14.3	SK
8-3V80	8.00	16.4	SF
8-3V106	10.60	26.5	SF
8-3V140	14.00	38.0	E
8-3V190	19.00	62.0	E
8-3V250	25.00	84.5	E
8-3V335	33.50	137.0	F

10 Grooves Face Width (F) = 4-11/32"

10-3V47	4.75	8.3	SK
10-3V50	5.00	9.1	SK
10-3V53	5.30	9.6	SK
10-3V56	5.60	10.6	SK
10-3V60	6.00	12.5	SK
10-3V65	6.50	14.4	SK
10-3V69	6.90	16.4	SF

3V Power-Wedge QD Sheaves for use with 3V and 3VX Power-Wedge belts

Part Number	Outside Diameter	POWER-WEDGE QD SHEAVES	
		Weight Less bushing (lbs)	Bushing

10 Grooves Face Width (F) = 4-11/32"

10-3V80	8.00	19.0	E
10-3V106	10.60	31.5	E
10-3V140	14.00	43.0	F
10-3V190	19.00	71.0	F
10-3V250	25.00	98.6	F
10-3V335	33.50	178.0	F

5V Power-Wedge QD Sheaves for use with 5V and 5VX Power-Wedge belts

2 Grooves Face Width (F) = 1-11/32"

2-5V44	4.40	3.2	SH
2-5V46	4.65	3.5	SDS
2-5V49	4.90	3.9	SDS
2-5V52	5.20	4.4	SDS
2-5V55	5.50	4.6	SDS
2-5V59	5.90	5.5	SDS
2-5V63	6.30	6.1	SK
2-5V67	6.70	6.6	SK
2-5V71	7.10	10.0	SK
2-5V75	7.50	11.5	SK
2-5V80	8.00	10.3	SK
2-5V85	8.50	11.4	SK
2-5V90	9.00	11.7	SK
2-5V92	9.25	12.5	SK
2-5V97	9.70	13.2	SK
2-5V103	10.30	14.7	SK
2-5V109	10.90	15.9	SK
2-5V113	11.30	16.3	SK
2-5V118	11.80	17.6	SK
2-5V125	12.50	19.5	SF
2-5V132	13.20	21.0	SF
2-5V140	14.00	22.8	SF
2-5V150	15.00	26.1	SF
2-5V160	16.00	29.2	SF
2-5V187	18.70	34.6	SF
2-5V212	21.20	45.0	SF
2-5V236	23.60	64.0	E
2-5V280	28.00	73.0	E

3 Grooves Face Width (F) = 2-3/8"

3-5V44	4.40	4.4	SDS
3-5V46	4.65	4.7	SDS
3-5V49	4.90	4.9	SDS
3-5V52	5.20	5.5	SDS
3-5V55	5.50	6.4	SDS
3-5V59	5.90	7.0	SDS
3-5V63	6.30	9.0	SK
3-5V67	6.70	10.8	SK
3-5V71	7.10	11.6	SF

## Power-Wedge QD Pulleys

5V Power-Wedge QD Sheaves for use with 5V and 5VX Power-Wedge belts

Part Number	POWER-WEDGE QD SHEAVES Weight Less		
	Outside Diameter	bushing (lbs)	Bushing

### 3 Grooves Face Width (F) = 2-3/8"

3-5V75	7.50	13.6	SF
3-5V80	8.00	15.5	SF
3-5V85	8.50	15.5	SF
3-5V90	9.00	17.3	SF
3-5V92	9.25	17.2	SF
3-5V97	9.75	18.0	SF
3-5V103	10.30	19.0	SF
3-5V109	10.90	20.5	SF
3-5V113	11.30	21.2	SF
3-5V118	11.80	22.0	SF
3-5V125	12.50	32.0	E
3-5V132	13.20	34.3	E
3-5V140	14.00	37.9	E
3-5V150	15.00	39.5	E
3-5V160	16.00	39.7	E
3-5V187	18.70	45.4	E
3-5V212	21.20	57.0	E
3-5V236	23.60	70.0	E
3-5V280	28.00	93.5	E
3-5V315	31.50	110.0	F
3-5V375	37.50	135.0	F
3-5V500	50.00	205.0	F

### 4 Grooves Face Width (F) = 3-1/16"

4-5V44	4.40	5.2	SD
4-5V46	4.65	5.8	SD
4-5V49	4.90	6.4	SD
4-5V52	5.20	7.1	SD
4-5V55	5.50	8.1	SD
4-5V59	5.90	9.6	SD
4-5V63	6.30	10.0	SK
4-5V67	6.70	10.5	SK
4-5V71	7.10	13.8	SK
4-5V75	7.50	15.5	SK
4-5V80	8.00	18.2	E
4-5V85	8.50	21.2	E
4-5V90	9.00	24.0	E
4-5V92	9.20	25.0	E
4-5V97	9.70	28.5	E
4-5V103	10.30	29.2	E
4-5V109	10.90	29.0	E
4-5V113	11.30	29.6	E
4-5V118	11.80	30.4	E
4-5V125	12.50	35.0	E
4-5V132	13.20	39.3	E
4-5V140	14.00	42.5	E
4-5V150	15.00	45.0	E
4-5V160	16.00	44.0	E
4-5V187	18.70	54.0	E
4-5V212	21.20	64.0	E
4-5V236	23.60	101.0	F

5V Power-Wedge QD Sheaves for use with 5V and 5VX Power-Wedge belts

Part Number	POWER-WEDGE QD SHEAVES Weight Less		
	Outside Diameter	bushing (lbs)	Bushing

### 4 Grooves Face Width (F) = 3-1/8"

4-5V280	28.00	118.0	F
4-5V315	31.50	148.0	F
4-5V375	37.50	185.0	F
4-5V500	50.00	255.0	J

### 5 Grooves Face Width (F) = 3-3/4"

5-5V44	4.4	5.9	SD
5-5V46	4.65	6.9	SD
5-5V49	4.9	7.8	SD
5-5V52	5.2	8.7	SD
5-5V55	5.5	9.5	SD
5-5V59	5.9	10	SK
5-5V63	6.3	11.8	SK
5-5V67	6.7	13.3	SF
5-5V71	7.1	15.7	SF
5-5V75	7.5	17.8	SF
5-5V80	8	20.5	E
5-5V85	8.5	23.4	E
5-5V90	9	26.2	E
5-5V92	9.2	28	E
5-5V97	9.7	33	E
5-5V103	10.3	33.3	E
5-5V109	10.9	32	E
5-5V113	11.3	33	E
5-5V118	11.8	34.5	E
5-5V125	12.5	39.5	E
5-5V132	13.2	42.3	E
5-5V140	14	45	E
5-5V150	15	51	E
5-5V160	16	53.5	E
5-5V187	18.7	78	F
5-5V212	21.2	88	F
5-5V236	23.6	101	F
5-5V280	28	126	F
5-5V315	31.5	164	J
5-5V375	37.5	195	J
5-5V500	50	290	J

### 8 Grooves Face Width (F) = 5-13/16"

8-5V71	7.1	21.4	SF
8-5V75	7.5	24.4	SF
8-5V80	8	26	E
8-5V85	8.5	30.8	E
8-5V90	9	34.9	E
8-5V92	9.25	40.5	F
8-5V97	9.75	46.4	F
8-5V103	10.3	52	F
8-5V109	10.9	59	F
8-5V113	11.3	61.2	F
8-5V118	11.8	59.5	F

## Power-Wedge QD Pulleys

5V Power-Wedge QD Sheaves for use with 5V and 5VX Power-Wedge belts

Part Number	Outside Diameter	POWER-WEDGE QD SHEAVES	
		Weight Less bushing (lbs)	Bushing

**8 Grooves Face Width (F) = 5-13/16"**

8-5V125	12.5	61	F
8-5V132	13.2	63.5	F
8-5V140	14	70	F
8-5V150	15	80	F
8-5V160	16	90	F
8-5V187	18.7	117	J
8-5V212	21.2	132	J
8-5V236	23.6	152	J
8-5V280	28	177	J
8-5V315	31.5	195	M
8-5V375	37.5	305	M
8-5V500	50	423	M

**9 Grooves Face Width (F) = 6-1/2"**

9-5V80	8	36.9	E
9-5V85	8.5	40.6	E
9-5V90	9	44.5	E
9-5V92	9.2	54.1	F
9-5V97	9.7	59.6	F
9-5V103	10.3	66.2	F
9-5V109	10.9	73.3	F
9-5V113	11.3	80.4	F
9-5V118	11.8	71.4	F
9-5V125	12.5	76.7	F
9-5V132	13.2	83.9	F
9-5V140	14	90.1	F
9-5V150	15	109.6	J
9-5V160	16	109.1	J
9-5V187	18.7	128.7	J
9-5V212	21.2	146	J
9-5V236	23.6	165.2	J
9-5V280	28	273.7	M
9-5V315	31.5	311.7	M
9-5V375	37.5	398.5	M
9-5V500	50	509.1	M

**10 Grooves Face Width (F) = 7-3/16"**

10-5V80	8	30.6	E
10-5V85	8.5	36.5	E
10-5V90	9	44.3	F
10-5V92	9.25	47.5	F
10-5V97	9.75	52	F
10-5V103	10.3	58	F
10-5V109	10.9	66	F
10-5V113	11.3	70	F
10-5V118	11.8	66	F
10-5V125	12.5	92	J
10-5V132	13.2	81	J
10-5V140	14	91	J
10-5V150	15	98	J

5V Power-Wedge QD Sheaves for use with 5V and 5VX Power-Wedge belts

Part Number	Outside Diameter	POWER-WEDGE QD SHEAVES	
		Weight Less bushing (lbs)	Bushing

**10 Grooves Face Width (F) = 7-3/16"**

10-5V160	16	113	J
10-5V187	18.7	130	J
10-5V212	21.2	147	J
10-5V236	23.6	176	M
10-5V280	28	242	M
10-5V315	31.5	288	M
10-5V375	37.5	340	M
10-5V500	50	485	M

8V Power-Wedge QD Sheaves for use with 8V and 8VX Power-Wedge belts

**4 Grooves Face Width (F) = 4-7/8"**

4-8V125	12.5	56	F
4-8V132	13.2	63	F
4-8V140	14	65	F
4-8V150	15	72	F
4-8V160	16	80	F
4-8V170	17	93	F
4-8V180	18	105	F
4-8V190	19	110	F
4-8V200	20	125	J
4-8V212	21.2	131	J
4-8V224	22.4	150	J
4-8V248	24.8	245	M
4-8V300	30	230	M
4-8V355	35.5	330	M
4-8V400	40	325	M
4-8V445	44.5	369	E
4-8V530	53	478	E

**5 Grooves Face Width (F) = 6"**

5-8V125	12.5	64	F
5-8V132	13.2	75	F
5-8V140	14	77	F
5-8V150	15	87	F
5-8V160	16	93	F
5-8V170	17	105	J
5-8V180	18	117	J
5-8V190	19	126	J
5-8V200	20	135	J
5-8V212	21.2	160	J
5-8V224	22.4	188	M
5-8V248	24.8	266	M
5-8V300	30	255	M
5-8V355	35.5	266	M
5-8V400	40	355	M
5-8V445	44.5	546	N
5-8V530	53	656	N

## Power-Wedge QD Pulleys

8V Power-Wedge QD Sheaves for use with 8V and 8VX Power-Wedge belts

Part Number	Outside Diameter	POWER-WEDGE QD SHEAVES Weight Less	
		bushing (lbs)	Bushing

### 6 Grooves Face Width (F) = 7-1/8"

6-8V125	12.5	79	F
6-8V132	13.2	86	F
6-8V140	14	92	F
6-8V150	15	116	J
6-8V160	16	119	J
6-8V170	17	125	J
6-8V180	18	131	J
6-8V190	19	146	J
6-8V200	20	180	M
6-8V212	21.2	200	M
6-8V224	22.4	215	M
6-8V248	24.8	285	M
6-8V300	30	306	M
6-8V355	35.5	468	N
6-8V400	40	426	N
6-8V445	44.5	584	N
6-8V530	53	658	N
6-8V630	63	860	P
6-8V710	71	1275	P

### 8 Grooves Face Width (F) = 9-3/8"

8-8V125	12.5	121	J
8-8V132	13.2	124	J
8-8V140	14	127	J
8-8V150	15	134	J
8-8V160	16	145	J
8-8V170	17	195	M
8-8V180	18	213	M
8-8V190	19	221	M
8-8V200	20	227	M
8-8V212	21.2	239	M
8-8V224	22.4	260	M
8-8V248	24.8	418	N
8-8V300	30	380	N
8-8V355	35.5	575	N
8-8V400	40	679	N
8-8V445	44.5	818	P
8-8V530	53	960	P
8-8V630	63	1490	P
8-8V710	71	1760	W

### 10 Grooves Face Width (F) = 11-5/8"

10-8V125	12.5	133	J
10-8V132	13.2	148	J
10-8V140	14	153	J
10-8V150	15	174	M
10-8V160	16	242	M
10-8V170	17	245	M
10-8V180	18	263	M
10-8V190	19	225	M

8V Power-Wedge QD Sheaves for use with 8V and 8VX Power-Wedge belts

Part Number	Outside Diameter	POWER-WEDGE QD SHEAVES Weight Less	
		bushing (lbs)	Bushing

### 10 Grooves Face Width (F) = 11-5/8"

10-8V200	20	250	M
10-8V212	21.2	280	M
10-8V224	22.4	330	N
10-8V248	24.8	463	N
10-8V300	30	440	N
10-8V355	35.5	596	P
10-8V400	40	745	P
10-8V445	44.5	789	P
10-8V530	53	1010	P
10-8V630	63	1443	W
10-8V710	71	1181	W

### 12 Grooves Face Width (F) = 13-7/8"

12-8V125	12.5	198	M
12-8V132	13.2	220	M
12-8V140	14	246	M
12-8V150	15	280	M
12-8V160	16	319	M
12-8V170	17	321	M
12-8V180	18	338	M
12-8V190	19	355	N
12-8V200	20	375	N
12-8V212	21.2	420	N
12-8V224	22.4	458	N
12-8V248	24.8	516	N
12-8V300	30	650	N
12-8V355	35.5	799	P
12-8V400	40	909	P
12-8V445	44.5	910	P
12-8V530	53	1331	P
12-8V630	63	1777	W
12-8V710	71	2002	W

\* Contact Carlisle for price and availability