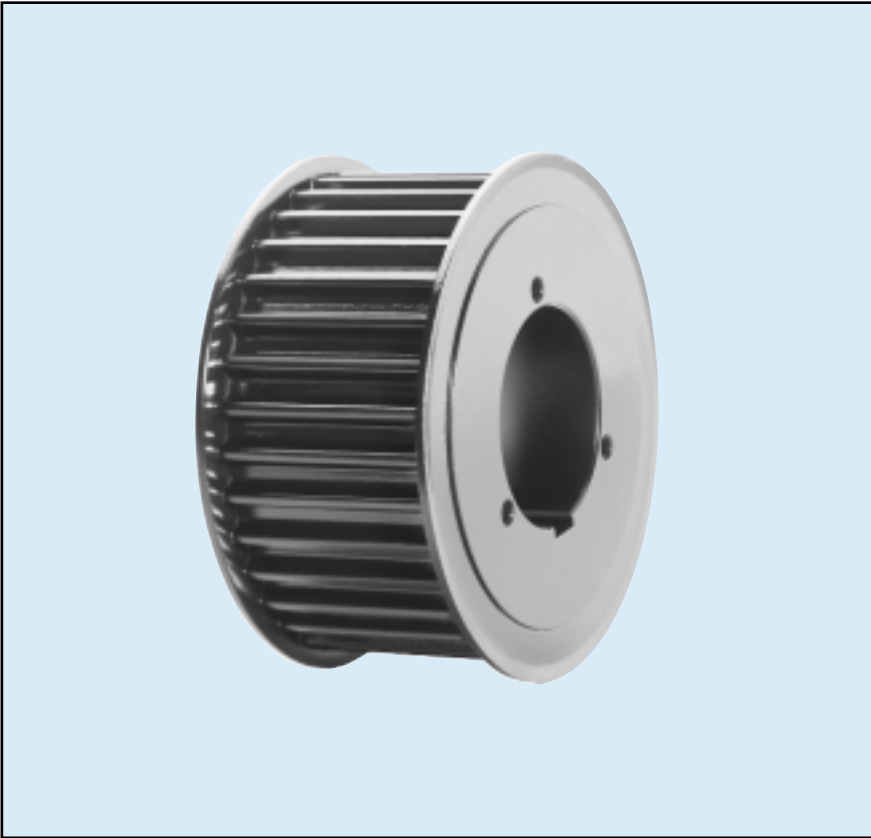


RPP® Panther® Synchronous Sprockets

STOCK SIZES

RPP Panther Sprockets are constructed from highest quality materials and designed specifically for use with RPP Panther Belts. The pulley teeth are made to mesh and conform exactly to those of the belt, resulting in a drive which functions as a precision gear system.

For Use With:
RPP Panther Belts
(8M, 14M)



Part Number	Outside Diameter		Pitch Diameter		Flange Diameter (inch)	Number of Grooves	Weight less bushing (lbs.)	Bushing or MPB
	(inch)	(mm)	(mm)	(inch)				

8M-12 (12mm width) — Face Width = 21mm (0.83 in)

22PTH8-12	2.16	54.65	56.03	2.21	2.56	22	1.9	MPB
24PTH8-12	2.36	59.74	61.12	2.41	2.76	24	0.5	JA
26PTH8-12	2.56	64.84	66.22	2.61	2.95	26	0.6	JA
28PTH8-12	2.76	69.93	71.31	2.81	3.15	28	0.7	QT
30PTH8-12	2.96	75.02	76.40	3.01	3.35	30	0.9	QT
32PTH8-12	3.16	80.12	81.50	3.21	3.54	32	1.1	QT
34PTH8-12	3.36	85.21	86.59	3.41	3.82	34	1.2	SH
36PTH8-12	3.56	90.30	91.68	3.61	3.94	36	1.3	SH
38PTH8-12	3.76	95.39	96.78	3.81	4.13	38	1.6	SH
40PTH8-12	3.96	100.49	101.87	4.01	4.33	40	1.9	SH
44PTH8-12	4.36	110.67	112.06	4.41	4.76	44	2.1	SDS
48PTH8-12	4.76	120.86	122.24	4.81	5.16	48	2.6	SDS
56PTH8-12	5.56	141.23	142.62	5.61	5.95	56	3.9	SDS
64PTH8-12	6.36	161.60	162.99	6.42	6.77	64	5.3	SDS
72PTH8-12	7.16	181.97	183.37	7.22	7.6	72	5.1	SDS
80PTH8-12	7.97	202.35	203.74	8.02	8.39	80	6.7	SDS
90PTH8-12	8.97	227.81	229.21	9.02	-	90	7.3	SDS
112PTH8-12	11.18	283.83	285.24	11.23	-	112	10.6	SK
144PTH8-12	14.38	365.32	366.73	14.44	-	144	18.5	SK
192PTH8-12	19.20	487.55	488.97	19.25	-	192	27.5	SF

RPP® Panther® Synchronous Sprockets

Part Number	Outside Diameter		Pitch Diameter		Flange Diameter (inch)	Number of Grooves	Weight less bushing (lbs.)	Bushing or MPB
	(inch)	(mm)	mm	inch				

8M-22 (22mm width) — Face Width = 31mm (1.22 in)

22PTH8-22	2.16	54.65	56.03	2.21	2.56	22	1.2	MPB
24PTH8-22	2.36	59.74	61.12	2.41	2.76	24	0.7	JA
26PTH8-22	2.56	64.84	66.22	2.61	2.95	26	0.7	JA
28PTH8-22	2.76	69.93	71.31	2.81	3.15	28	1.1	QT
30PTH8-22	2.96	75.02	76.40	3.01	3.35	30	1.3	QT
32PTH8-22	3.16	80.12	81.50	3.21	3.54	32	1.4	QT
34PTH8-22	3.36	85.21	86.59	3.41	3.82	34	1.3	SH
36PTH8-22	3.56	90.30	91.68	3.61	3.94	36	1.6	SH
38PTH8-22	3.76	95.39	96.78	3.81	4.13	38	1.9	SH
40PTH8-22	3.96	100.49	101.87	4.01	4.33	40	2.3	SH
44PTH8-22	4.36	110.67	112.06	4.41	4.76	44	2.5	SDS
48PTH8-22	4.76	120.86	122.24	4.81	5.16	48	3.2	SDS
56PTH8-22	5.56	141.23	142.62	5.61	5.95	56	4.5	SDS
64PTH8-22	6.36	161.60	162.99	6.42	6.77	64	6.1	SDS
72PTH8-22	7.16	181.97	183.37	7.22	7.6	72	6	SDS
80PTH8-22	7.97	202.35	203.74	8.02	8.39	80	7.8	SDS
90PTH8-22	8.97	227.81	229.21	9.02	-	90	7.5	SDS
112PTH8-22	11.18	283.83	285.24	11.23	-	112	12	SK
144PTH8-22	14.38	365.32	366.73	14.44	-	144	20.7	SK
192PTH8-22	19.20	487.55	488.97	19.25	-	192	30.6	SF

8M-35 (35mm width) — Face Width = 44mm (1.73 in)

22PTH8-35	2.16	54.65	56.03	2.21	2.56	22	1.6	MPB
24PTH8-35	2.36	59.74	61.12	2.41	2.76	24	2	MPB
26PTH8-35	2.56	64.84	66.22	2.61	2.95	26	2.4	MPB
28PTH8-35	2.76	69.93	71.31	2.81	3.15	28	1.5	QT
30PTH8-35	2.96	75.02	76.40	3.01	3.35	30	1.8	QT
32PTH8-35	3.16	80.12	81.50	3.21	3.54	32	1.6	QT
34PTH8-35	3.36	85.21	86.59	3.41	3.82	34	1.6	SH
36PTH8-35	3.56	90.30	91.68	3.61	3.94	36	2	SH
38PTH8-35	3.76	95.39	96.78	3.81	4.13	38	2.3	SH
40PTH8-35	3.96	100.49	101.87	4.01	4.33	40	2.8	SH
44PTH8-35	4.36	110.67	112.06	4.41	4.76	44	3.8	SD
48PTH8-35	4.76	120.86	122.24	4.81	5.16	48	4.9	SD
56PTH8-35	5.56	141.23	142.62	5.61	5.95	56	6.2	SK
64PTH8-35	6.36	161.60	162.99	6.42	6.77	64	8.8	SK
72PTH8-35	7.16	181.97	183.37	7.22	7.6	72	11.6	SK
80PTH8-35	7.97	202.35	203.74	8.02	8.39	80	11.3	SF
90PTH8-35	8.97	227.81	229.21	9.02	-	90	14	SF
112PTH8-35	11.18	283.83	285.24	11.23	-	112	17.2	SF
144PTH8-35	14.38	365.32	366.73	14.44	-	144	27.5	E
192PTH8-35	19.20	487.55	488.97	19.25	-	192	46.2	E

8M-60 (60mm width) — Face Width = 70mm (2.76 in)

22PTH8-60	2.16	54.65	56.03	2.21	2.56	22	2.3	MPB
24PTH8-60	2.36	59.74	61.12	2.41	2.76	24	2.7	MPB
26PTH8-60	2.56	64.84	66.22	2.61	2.95	26	3.3	MPB
28PTH8-60	2.76	69.93	71.31	2.81	3.15	28	4	MPB
30PTH8-60	2.96	75.02	76.40	3.01	3.35	30	4.8	MPB
32PTH8-60	3.16	80.12	81.50	3.21	3.54	32	5.7	MPB
34PTH8-60	3.36	85.21	86.59	3.41	3.82	34	6.8	MPB
36PTH8-60	3.56	90.30	91.68	3.61	3.94	36	2.4	SKQ

RPP® Panther® Synchronous Sprockets

Part Number	Outside Diameter		Pitch Diameter		Flange Diameter (inch)	Number of Grooves	Weight less bushing (lbs.)	Bushing or MPB
	(inch)	(mm)	(mm)	(inch)				

8M-60 (60mm width) — Face Width = 70mm (2.76 in)

38PTH8-60	3.76	95.39	96.78	3.81	4.13	38	3	SKQ
40PTH8-60	3.96	100.49	101.87	4.01	4.33	40	3.8	SKQ
44PTH8-60	4.36	110.67	112.06	4.41	4.76	44	4.4	SFQ
48PTH8-60	4.76	120.86	122.24	4.81	5.16	48	6.1	SFQ
56PTH8-60	5.56	141.23	142.62	5.61	5.95	56	8.4	EQ
64PTH8-60	6.36	161.60	162.99	6.42	6.77	64	10.2	SF
72PTH8-60	7.16	181.97	183.37	7.22	7.6	72	14	E
80PTH8-60	7.97	202.35	203.74	8.02	8.39	80	18.5	E
90PTH8-60	8.97	227.81	229.21	9.02	-	90	24.5	E
112PTH8-60	11.18	283.83	285.24	11.23	-	112	53.3	F
144PTH8-60	14.38	365.32	366.73	14.44	-	144	45.3	F
192PTH8-60	19.20	487.55	488.97	19.25	-	192	62	F

14M-20 (20mm width) — Face Width = 31mm (1.22 in)

28PTH14-20	4.81	122.12	124.78	4.91	5.56	28	3.2	SK
29PTH14-20	4.98	126.57	129.23	5.09	5.56	29	3.6	SK
30PTH14-20	5.16	130.99	133.69	5.26	6.09	30	4	SK
32PTH14-20	5.51	139.88	142.60	5.61	6.09	32	4.9	SK
34PTH14-20	5.86	148.79	151.52	5.97	6.5	34	5.8	SK
36PTH14-20	6.21	157.68	160.43	6.32	6.87	36	6.4	SF
38PTH14-20	6.56	166.60	169.34	6.67	7.22	38	7.5	SF
40PTH14-20	6.91	175.49	178.25	7.02	7.5	40	8.6	SF
44PTH14-20	7.61	193.28	196.08	7.72	8.34	44	12	E
48PTH14-20	8.31	211.11	213.90	8.42	8.9	48	14.7	E
52PTH14-20	9.01	228.85	231.73	9.12	9.68	52	17.8	E
56PTH14-20	9.72	246.76	249.55	9.82	10.38	56	21	E
60PTH14-20	10.42	264.66	267.38	10.53	11.06	60	25.5	E
64PTH14-20	11.12	282.41	285.21	11.23	11.68	64	23	E
68PTH14-20	11.82	300.23	303.03	11.93	12.5	68	25.2	E
72PTH14-20	12.52	318.06	320.86	12.63	13.19	72	24.4	E
80PTH14-20	13.93	353.71	356.51	14.04	14.63	80	28	E
90PTH14-20	15.68	398.28	401.07	15.79	-	90	29.4	E
112PTH14-20	19.54	496.32	499.11	19.65	-	112	39.1	E
144PTH14-20	25.15	638.92	641.71	25.26	-	144	63.3	E
168PTH14-20	29.37	745.88	748.66	29.47	-	168	131	F
192PTH14-20	33.58	852.82	855.62	33.69	-	192	146	J
216PTH14-20	37.79	959.76	962.57	37.90	-	216	171	J

14M-42 (42mm width) — Face Width = 53mm (2.09 in)

28PTH14-42	4.81	122.12	124.78	4.91	5.56	28	5.1	SK
29PTH14-42	4.98	126.57	129.23	5.09	5.56	29	5.8	SK
30PTH14-42	5.16	130.99	133.69	5.26	6.09	30	5.5	SK
32PTH14-42	5.51	139.88	142.60	5.61	6.09	32	7	SK
34PTH14-42	5.86	148.79	151.52	5.97	6.5	34	7.4	SF
36PTH14-42	6.21	157.68	160.43	6.32	6.87	36	8.5	SF
38PTH14-42	6.56	166.60	169.34	6.67	7.22	38	10.5	SF
40PTH14-42	6.91	175.49	178.25	7.02	7.5	40	11.9	SF
44PTH14-42	7.61	193.28	196.08	7.72	8.34	44	14.6	E
48PTH14-42	8.31	211.11	213.90	8.42	8.9	48	18.8	E
52PTH14-42	9.01	228.85	231.73	9.12	9.68	52	23	E
56PTH14-42	9.72	246.76	249.55	9.82	10.38	56	27.4	E
60PTH14-42	10.42	264.66	267.38	10.53	11.06	60	32.2	E
64PTH14-42	11.12	282.41	285.21	11.23	11.68	64	28	E

RPP® Panther® Synchronous Sprockets

Part Number	Outside Diameter		Pitch Diameter		Flange Diameter (inch)	Number of Grooves	Weight less bushing (lbs.)	Bushing or MPB
	(inch)	(mm)	(mm)	(inch)				

14M-42 (42mm width) — Face Width = 53mm (2.09 in)

68PTH14-42	11.82	300.23	303.03	11.93	12.5	68	31.2	E
72PTH14-42	12.52	318.06	320.86	12.63	13.19	72	30.2	E
80PTH14-42	13.93	353.71	356.51	14.04	14.63	80	34	E
90PTH14-42	15.68	398.28	401.07	15.79	-	90	43.6	F
112PTH14-42	19.54	496.32	499.11	19.65	-	112	76.9	F
144PTH14-42	25.15	638.92	641.71	25.26	-	144	111	F
168PTH14-42	29.37	745.88	748.66	29.47	-	168	140	F
192PTH14-42	33.58	852.82	855.62	33.69	-	192	158	J
216PTH14-42	37.79	959.76	962.57	37.90	-	216	186	J

14M-65 (65mm width) — Face Width = 77mm (3.03 in)

28PTH14-65	4.81	122.12	124.78	4.91	5.56	28	6.7	SFQ
29PTH14-65	4.98	126.57	129.23	5.09	5.56	29	7.8	SFQ
30PTH14-65	5.16	130.99	133.69	5.26	6.09	30	6.2	EQ
32PTH14-65	5.51	139.88	142.60	5.61	6.09	32	8.3	EQ
34PTH14-65	5.86	148.79	151.52	5.97	6.5	34	10.7	EQ
36PTH14-65	6.21	157.68	160.43	6.32	6.87	36	11.4	FQ
38PTH14-65	6.56	166.60	169.34	6.67	7.22	38	14.7	FQ
40PTH14-65	6.91	175.49	178.25	7.02	7.5	40	17.8	FQ
44PTH14-65	7.61	193.28	196.08	7.72	8.34	44	17.7	E
48PTH14-65	8.31	211.11	213.90	8.42	8.9	48	23	E
52PTH14-65	9.01	228.85	231.73	9.12	9.68	52	28	E
56PTH14-65	9.72	246.76	249.55	9.82	10.38	56	39	F
60PTH14-65	10.42	264.66	267.38	10.53	11.06	60	46	F
64PTH14-65	11.12	282.41	285.21	11.23	11.68	64	53.7	F
68PTH14-65	11.82	300.23	303.03	11.93	12.5	68	46.8	F
72PTH14-65	12.52	318.06	320.86	12.63	13.19	72	51.1	F
80PTH14-65	13.93	353.71	356.51	14.04	14.63	80	53	F
90PTH14-65	15.68	398.28	401.07	15.79	-	90	52.3	F
112PTH14-65	19.54	496.32	499.11	19.65	-	112	82.6	J
144PTH14-65	25.15	638.92	641.71	25.26	-	144	189	M
168PTH14-65	29.37	745.88	748.66	29.47	-	168	208	M
192PTH14-65	33.58	852.82	855.62	33.69	-	192	264	M
216PTH14-65	37.79	959.76	962.57	37.90	-	216	303	M

14M-90 (90mm width) — Face Width = 103mm (4.06 in)

28PTH14-90	4.81	122.12	124.78	4.91	5.56	28	18.9	MPB
29PTH14-90	4.98	126.57	129.23	5.09	5.56	29	20.2	MPB
30PTH14-90	5.16	130.99	133.69	5.26	6.09	30	8	EQ
32PTH14-90	5.51	139.88	142.60	5.61	6.09	32	10.9	EQ
34PTH14-90	5.86	148.79	151.52	5.97	6.5	34	13.8	EQ
36PTH14-90	6.21	157.68	160.43	6.32	6.87	36	13.8	FQ
38PTH14-90	6.56	166.60	169.34	6.67	7.22	38	17.4	FQ
40PTH14-90	6.91	175.49	178.25	7.02	7.5	40	21.6	FQ
44PTH14-90	7.61	193.28	196.08	7.72	8.34	44	27	FQ
48PTH14-90	8.31	211.11	213.90	8.42	8.9	48	36	FQ
52PTH14-90	9.01	228.85	231.73	9.12	9.68	52	37	F
56PTH14-90	9.72	246.76	249.55	9.82	10.38	56	44	F
60PTH14-90	10.42	264.66	267.38	10.53	11.06	60	53	F
64PTH14-90	11.12	282.41	285.21	11.23	11.68	64	60.1	F
68PTH14-90	11.82	300.23	303.03	11.93	12.5	68	56.1	F
72PTH14-90	12.52	318.06	320.86	12.63	13.19	72	61.1	F
80PTH14-90	13.93	353.71	356.51	14.04	14.63	80	74.7	J

RPP® Panther® Synchronous Sprockets

Part Number	Outside Diameter		Pitch Diameter		Flange Diameter (inch)	Number of Grooves	Weight less bushing (lbs.)	Bushing or MPB
	(inch)	(mm)	(mm)	(inch)				
14M-90 (90mm width) — Face Width = 103mm (4.06 in)								
90PTH14-90	15.68	398.28	401.07	15.79	-	90	67	J
112PTH14-90	19.54	496.32	499.11	19.65	-	112	90.6	J
144PTH14-90	25.15	638.92	641.71	25.26	-	144	199	M
168PTH14-90	29.37	745.88	748.66	29.47	-	168	235	M
192PTH14-90	33.58	852.82	855.62	33.69	-	192	271	M
216PTH14-90	37.79	959.76	962.57	37.90	-	216	377	M
14m-120 (120mm width) — Face Width = 133mm (5.24 in)								
28PTH14-120	4.81	122.12	124.78	4.91	5.56	28	21	MPB
29PTH14-120	4.98	126.57	129.23	5.09	5.56	29	23	MPB
30PTH14-120	5.16	130.99	133.69	5.26	6.09	30	9.8	EQ
32PTH14-120	5.51	139.88	142.60	5.61	6.09	32	13.7	EQ
34PTH14-120	5.86	148.79	151.52	5.97	6.5	34	14.4	FQ
36PTH14-120	6.21	157.68	160.43	6.32	6.87	36	17	FQ
38PTH14-120	6.56	166.60	169.34	6.67	7.22	38	21.5	FQ
40PTH14-120	6.91	175.49	178.25	7.02	7.5	40	31.9	FQ
44PTH14-120	7.61	193.28	196.08	7.72	8.34	44	31.9	FQ
48PTH14-120	8.31	211.11	213.90	8.42	8.9	48	41.3	FQ
52PTH14-120	9.01	228.85	231.73	9.12	9.68	52	43	F
56PTH14-120	9.72	246.76	249.55	9.82	10.38	56	51.1	F
60PTH14-120	11.20	264.66	267.38	10.53	11.06	60	59.8	F
64PTH14-120	11.12	282.41	285.21	11.23	11.68	64	73	J
68PTH14-120	11.82	300.23	303.03	11.93	12.5	68	94	J
72PTH14-120	12.52	318.06	320.86	12.63	13.19	72	96	J
80PTH14-120	13.93	353.71	356.51	14.04	14.63	80	96	J
90PTH14-120	15.68	398.28	401.07	15.79	-	90	150	M
112PTH14-120	19.54	496.32	499.11	19.65	-	112	157	M
144PTH14-120	25.15	638.92	641.71	25.26	-	144	214	M
168PTH14-120	29.37	745.88	748.66	29.47	-	168	273	M
192PTH14-120	33.58	852.82	855.62	33.69	-	192	365	M
216PTH14-120	37.79	959.76	962.57	37.90	-	216	423	M