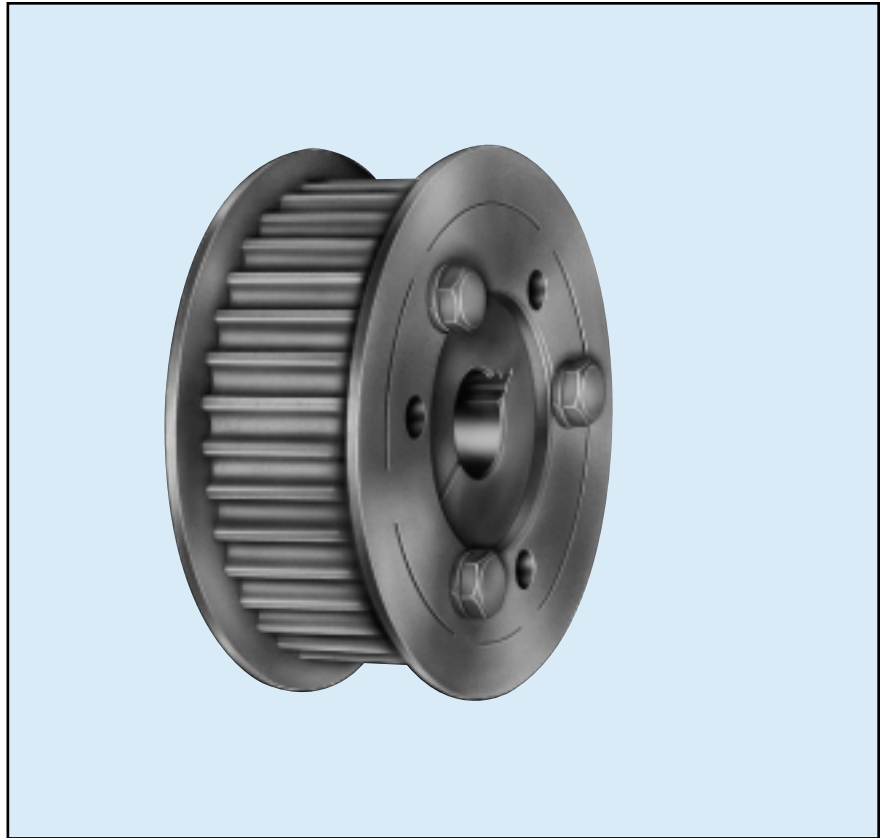


## RPP® Synchronous Sprockets

### STOCK SIZES

RPP Synchronous Sprockets are designed exclusively for the RPP belt. RPP drives provide positive trouble-free transmission in high torque ranges previously serviced only by chain or gear components.

**For Use With:**  
RPP (5M, 20M)  
RPP Plus (8M, 14M) Belts



Part Number	Outside Diameter		Pitch Diameter		Flange Diameter (inch)	Number of Grooves	Weight less bushing (lbs.)	Bushing or **MPB
	(inch)	(mm)	(inch)	(mm)				

#### 5M-15 — Face Width = .84" For Belts 9mm and 15mm wide

P32-5M-15	1.96	49.78	2.01	50.93	2.16	32	0.8	1/2*
P34-5M-15	2.09	53.09	2.13	54.11	2.29	34	0.9	1/2*
P36-5M-15	2.21	56.13	2.26	57.30	2.41	36	1.1	1/2*
P38-5M-15	2.34	59.32	2.38	60.48	2.54	38	1.4	JA
P40-5M-15	2.46	62.48	2.51	63.66	2.66	40	1.5	JA
P44-5M-15	2.71	68.83	2.76	70.03	2.91	44	1.8	JA
P48-5M-15	2.96	75.18	3.01	76.40	3.16	48	1.8	JA
P52-5M-15	3.21	81.53	3.26	82.76	3.41	52	2	JA
P56-5M-15	3.46	87.88	3.51	89.13	3.66	56	2.4	SH
P60-5M-15	3.72	94.49	3.76	95.50	3.92	60	2.7	SH
P64-5M-15	3.97	100.84	4.01	101.86	4.16	64	2.9	SH
P68-5M-15	4.22	107.19	4.26	108.23	4.41	68	3.3	SDS
P72-5M-15	4.47	113.54	4.51	114.60	4.66	72	3.6	SDS
P80-5M-15	4.97	126.24	5.01	127.33	—	80	4.4	SDS
P90-5M-15	5.59	141.99	5.64	143.25	—	90	5.4	SDS
P112-5M-15	6.97	177.04	7.02	178.27	—	112	6.4	SDS

1/2" minimum plain bore, no keyway or setscrews

#### 5M-25 — Face Width = 1.25" For Belts 25mm wide

P32-5M-25	1.96	49.78	2.01	50.93	2.16	32	1.1	1/2*
P34-5M-25	2.09	53.09	2.13	54.11	2.29	34	1.3	1/2*
P36-5M-25	2.21	56.13	2.26	57.30	2.41	36	1.4	1/2*

## RPP® Synchronous Sprockets

Part Number	Outside Diameter		Pitch Diameter		Flange Diameter (inch)	Number of Grooves	Weight less bushing (lbs.)	Bushing or **MPB
	(inch)	(mm)	(inch)	(mm)				

### 5M-25 — Face Width = 1.25" For Belts 25mm wide

P38-5M-25	2.34	59.43	2.38	60.48	2.54	38	1.6	JA
P40-5M-25	2.46	62.48	2.51	63.66	2.66	40	1.9	JA
P44-5M-25	2.71	68.83	2.76	70.03	2.91	44	2.2	JA
P48-5M-25	2.96	75.18	3.01	76.40	3.16	48	2	JA
P52-5M-25	3.21	81.53	3.26	82.76	3.41	52	2.2	JA
P56-5M-25	3.46	87.88	3.51	89.13	3.66	56	2.6	SH
P60-5M-25	3.72	94.49	3.76	95.50	3.92	60	2.8	SH
P64-5M-25	3.97	100.84	4.01	101.86	4.16	64	3.3	SH
P68-5M-25	4.22	107.19	4.26	108.23	4.41	68	3.7	SDS
P72-5M-25	4.47	113.54	4.51	114.60	4.66	72	4	SDS
P80-5M-25	4.97	126.24	5.01	127.33	—	80	4.8	SDS
P90-5M-25	5.59	141.99	5.64	143.25	—	90	5.9	SDS
P112-5M-25	6.97	177.04	7.02	178.27	—	112	7.2	SDS

1/2" minimum plain bore, no keyway or setscrews

### 8M-20 — Face Width = 1-1/8" For Belts 20mm (.79") wide

P22-8M-20	2.16	54.65	2.21	56.02	2.56	22	1.6	MPB*
P24-8M-20	2.36	59.74	2.41	61.12	2.76	24	1.5	JA
P26-8M-20	2.56	64.84	2.61	66.21	2.95	26	1.8	JA
P28-8M-20	2.76	69.93	2.81	71.3	3.15	28	1.5	QT
P30-8M-20	2.96	75.02	3.01	76.39	3.35	30	2	QT
P32-8M-20	3.16	80.12	3.21	81.49	3.54	32	2.1	QT
P34-8M-20	3.36	85.21	3.41	86.58	3.82	34	2.2	SH
P36-8M-20	3.56	90.30	3.61	91.67	3.94	36	2.5	SH
P38-8M-20	3.76	95.39	3.81	96.77	4.13	38	2.8	SH
P40-8M-20	3.96	100.49	4.01	101.86	4.33	40	2.3	SH
P44-8M-20	4.36	110.67	4.41	112.05	4.76	44	2.5	SDS
P48-8M-20	4.76	120.86	4.81	122.23	5.16	48	3.2	SDS
P56-8M-20	5.56	141.23	5.61	142.6	5.95	56	4.5	SDS
P64-8M-20	6.36	161.60	6.42	162.97	6.77	64	6	SDS
P72-8M-20	7.16	181.97	7.22	183.35	7.60	72	5.7	SDS
P80-8M-20	7.97	202.35	8.02	203.72	8.39	80	6.5	SDS
P90-8M-20	8.97	227.81	9.02	229.18	—	90	7	SDS

### 8M-30 — Face Width = 1-1/2" For Belts 30mm (1.18") wide

P22-8M-30	2.16	54.65	2.21	56.02	2.56	22	2	MPB*
P24-8M-30	2.36	59.74	2.41	61.12	2.76	24	2.5	JA*
P26-8M-30	2.56	64.84	2.61	66.21	2.95	26	3.2	JA*
P28-8M-30	2.76	69.93	2.81	71.3	3.15	28	1.8	QT
P30-8M-30	2.96	75.02	3.01	76.39	3.35	30	2	QT
P32-8M-30	3.16	80.12	3.21	81.49	3.54	32	2.2	QT
P34-8M-30	3.36	85.21	3.41	86.58	3.82	34	2.4	SH
P36-8M-30	3.56	90.30	3.61	91.67	3.94	36	2.8	SH
P38-8M-30	3.76	95.39	3.81	96.77	4.13	38	3.2	SH
P40-8M-30	3.96	100.49	4.01	101.86	4.33	40	2.7	SH
P44-8M-30	4.36	110.67	4.41	112.05	4.76	44	3	SDS
P48-8M-30	4.76	120.86	4.81	122.23	5.16	48	3.7	SDS
P56-8M-30	5.56	141.23	5.61	142.6	5.95	56	5	SDS
P64-8M-30	6.36	161.60	6.42	162.97	6.77	64	8.5	SK
P72-8M-30	7.16	181.97	7.22	183.35	7.60	72	7.8	SK
P80-8M-30	7.97	202.35	8.02	203.72	8.39	80	9.8	SK
P90-8M-30	8.97	227.81	9.02	229.18	—	90	11.5	SK
P112-8M-30	11.18	283.83	11.23	285.21	—	112	13.4	SK

\*1/2" minimum plain bore, furnished less keyseat or setscrews.

Some RPP sprockets use "QT" style bushings instead of QD bushings to permit installation on larger shaft diameters. See table of contents for "QT" bushing information.

## RPP® Synchronous Sprockets

Part Number	Outside Diameter		Pitch Diameter		Flange Diameter (inch)	Number of Grooves	Weight less bushing (lbs.)	Bushing or **MPB
	(inch)	(mm)	(inch)	(mm)				

### 8M-50 — Face Width (F) = 2-3/8" For Belts 50mm (1.97") wide

P28-8M-50	2.76	69.93	2.81	71.3	3.15	28	2.4	3/4" *
P30-8M-50	2.96	75.02	3.01	76.39	3.35	30	2.7	3/4" *
P32-8M-50	3.16	80.12	3.21	81.49	3.54	32	3	1/2" *
P34-8M-50	3.36	85.21	3.41	86.58	3.82	34	3	SH
P36-8M-50	3.56	90.30	3.61	91.67	3.94	36	3.8	SH
P38-8M-50	3.76	95.39	3.81	96.77	4.13	38	4.2	SH
P40-8M-50	3.96	100.49	4.01	101.86	4.33	40	3.7	SH
P44-8M-50	4.36	110.67	4.41	112.05	4.76	44	4.7	SD
P48-8M-50	4.76	120.86	4.81	122.23	5.16	48	6	SD
P56-8M-50	5.56	141.23	5.61	142.6	5.95	56	7.6	SK
P64-8M-50	6.36	161.60	6.42	162.97	6.77	64	10.3	SK
P72-8M-50	7.16	181.97	7.22	183.35	7.60	72	13.3	SK
P80-8M-50	7.97	202.35	8.02	203.72	8.36	80	12.7	SF
P90-8M-50	8.97	227.81	9.02	229.18	—	90	16	SF
P112-8M-50	11.18	283.83	11.23	285.21	—	112	21	SF
P144-8M-50	14.38	365.32	14.44	366.69	—	144	35	E
P192-8M-50	19.20	487.55	19.25	488.92	—	192	45	E

\*minimum plain bore, furnished less keyseat or setscrews.

### 8M-85 — Face Width (F) = 3-3/4" For Belts 85mm (3.35") wide

P34-8M-85	3.36	85.21	3.41	86.58	3.82	34	4	MPB
P36-8M-85	3.56	90.30	3.61	91.67	3.94	36	5.2	SKQ
P38-8M-85	3.76	95.39	3.81	96.77	4.13	38	5.8	SKQ
P40-8M-85	3.96	100.49	4.01	101.86	4.33	40	4.6	SKQ
P44-8M-85	4.36	110.67	4.41	112.05	4.76	44	6.2	SFQ
P48-8M-85	4.76	120.86	4.81	122.23	5.16	48	7.8	SFQ
P56-8M-85	5.56	141.23	5.61	142.6	5.95	56	9.8	EQ
P64-8M-85	6.36	161.60	6.42	162.97	6.77	64	13	SF
P72-8M-85	7.16	181.97	7.22	183.35	7.60	72	16	E
P80-8M-85	7.97	202.35	8.02	203.72	8.39	80	17	E
P90-8M-85	8.97	227.81	9.02	229.18	—	90	20	E
P112-8M-85	11.18	283.83	11.23	285.21	—	112	28	F
P144-8M-85	14.38	365.32	14.44	366.69	—	144	46	F
P192-8M-85	19.20	487.55	19.25	488.92	—	192	61	F

### 14M-40 — Face Width = 2-1/8" For Belts 40mm (1.57") wide

P28-14M-40	4.81	122.12	4.91	124.78	5.56	28	5.20	SK
P29-14M-40	4.98	126.57	5.09	129.23	5.56	29	5.90	SK
P30-14M-40	5.16	130.99	5.26	133.69	6.09	30	5.6	SK
P32-14M-40	5.51	139.88	5.61	142.60	6.09	32	7.2	SK
P34-14M-40	5.86	148.79	5.97	151.52	6.50	34	8.6	SK
P36-14M-40	6.21	157.68	6.32	160.43	6.87	36	8.9	SF
P38-14M-40	6.56	166.60	6.67	169.34	7.22	38	10.3	SF
P40-14M-40	6.91	175.49	7.02	178.25	7.50	40	12.1	SF
P44-14M-40	7.61	193.28	7.72	196.08	8.34	44	14.8	E
P48-14M-40	8.31	211.11	8.42	213.90	8.90	48	19.0	E
P52-14M-40	9.01	228.93	9.12	231.75	9.68	52	19.2	E
P56-14M-40	9.72	246.76	9.82	249.55	10.38	56	27.7	E
P60-14M-40	10.42	264.59	10.53	267.38	11.06	60	28.6	E
P64-14M-40	11.12	282.41	11.23	285.21	11.68	64	28.8	E
P68-14M-40	11.82	300.23	11.93	303.03	12.50	68	29.0	E
P72-14M-40	12.52	318.06	12.63	320.86	13.19	72	29.9	E
P80-14M-40	13.93	353.71	14.04	356.51	14.63	80	34.3	E

## RPP® Synchronous Sprockets

Part Number	Outside Diameter		Pitch Diameter		Flange Diameter (inch)	Number of Grooves	Weight less bushing (lbs.)	Bushing or **MPB
	(inch)	(mm)	(inch)	(mm)				

### 14M-40 — Face Width = 2-1/8" For Belts 40mm (1.57") wide

P90-14M-40	15.68	398.28	15.79	401.07	—	90	33.9	E
P112-14M-40	19.54	496.32	19.65	499.11	—	112	45.0	E
P144-14M-40	25.15	638.92	25.26	641.71	—	144	72.0	E
P168-14M-40	29.37	752.73	29.47	748.66	—	168	87.1	F
P192-14M-40	33.58	852.83	33.69	855.62	—	192	108.1	F
P216-14M-40	37.79	959.76	37.90	962.57	—	216	141.1	F

### 14M-55 — Face Width (F) = 2-3/4" For Belts 55mm (2.17") wide

P28-14M-55	4.81	122.12	4.91	124.78	5.56	28	6.6	SK
P29-14M-55	4.98	126.57	5.09	129.23	5.56	29	7.5	SK
P30-14M-55	5.16	130.99	5.26	133.69	6.09	30	6.7	SK
P32-14M-55	5.51	139.88	5.61	142.60	6.09	32	8.7	SK
P34-14M-55	5.86	148.79	5.97	151.52	6.50	34	10.5	SK
P36-14M-55	6.21	157.68	6.32	160.43	6.87	36	10.6	SF
P38-14M-55	6.56	166.60	6.67	169.34	7.22	38	12.2	SF
P40-14M-55	6.91	175.49	7.02	178.25	7.50	40	14.4	SF
P44-14M-55	7.61	193.28	7.72	196.08	8.34	44	16.9	E
P48-14M-55	8.31	211.11	8.42	213.90	8.90	48	21.9	E
P52-14M-55	9.01	228.85	9.12	231.73	9.68	52	28.5	E
P56-14M-55	9.72	246.76	9.82	249.55	10.38	56	31.1	E
P60-14M-55	10.42	264.66	10.53	267.38	11.06	60	38.6	E
P64-14M-55	11.12	282.41	11.23	285.21	11.68	64	52.3	F
P68-14M-55	11.82	300.23	11.93	303.03	12.50	68	47.6	F
P72-14M-55	12.52	318.06	12.63	320.86	13.19	72	47.6	F
P80-14M-55	13.93	353.71	14.04	356.51	14.63	80	51.5	F
P90-14M-55	15.68	398.28	15.79	401.07	—	90	47.7	F
P112-14M-55	19.54	496.32	19.65	499.11	—	112	62	F
P144-14M-55	25.15	638.92	25.26	641.71	—	144	96	F
P168-14M-55	29.37	745.88	29.47	748.66	—	168	101	F
P192-14M-55	33.58	852.82	33.69	855.62	—	192	160.1	F
P216-14M-55	37.79	959.76	37.90	962.57	—	216	180	F

### 14M-85 — Face Width = 4" For Belts 85mm (3.35") wide

P28-14M-85	4.81	122.12	4.91	124.78	5.56	28	16.1	SFQ
P29-14M-85	4.98	126.57	5.09	129.23	5.56	29	17.5	SFQ
P30-14M-85	5.16	130.99	5.26	133.69	6.09	30	8.8	EQ
P32-14M-85	5.51	139.88	5.61	142.60	6.09	32	11.7	EQ
P34-14M-85	5.86	148.79	5.97	151.52	6.50	34	14.2	EQ
P36-14M-85	6.21	157.68	6.32	160.43	6.87	36	13.9	SF
P38-14M-85	6.56	166.60	6.67	169.34	7.22	38	16.1	SF
P40-14M-85	6.91	175.49	7.02	178.25	7.50	40	19.1	SF
P44-14M-85	7.61	193.28	7.72	196.08	8.34	44	21	E
P48-14M-85	8.31	211.11	8.42	213.90	8.90	48	27.6	E
P52-14M-85	9.01	228.85	9.12	231.73	9.68	52	34.8	E
P56-14M-85	9.72	246.76	9.82	249.55	10.38	56	44.4	F
P60-14M-85	10.42	264.66	10.53	267.38	11.06	60	55.9	F
P64-14M-85	11.12	246.76	11.23	285.21	11.68	64	60.4	F
P68-14M-85	11.82	300.23	11.93	303.03	12.50	68	57.2	F
P72-14M-85	12.52	318.06	12.63	320.86	13.19	72	58.2	F
P80-14M-85	13.93	353.71	14.04	356.51	14.63	80	60.6	F
P90-14M-85	15.68	398.28	15.79	401.07	—	90	58.1	F
P112-14M-85	19.54	496.32	19.65	499.11	—	112	76	F
P144-14M-85	25.15	638.92	25.26	641.71	—	144	108	F

## RPP® Synchronous Sprockets

Part Number	Outside Diameter		Pitch Diameter		Flange Diameter (inch)	Number of Grooves	Weight less bushing (lbs.)	Bushing or **MPB
	(inch)	(mm)	(inch)	(mm)				

### 14M-85 — Face Width = 4" For Belts 85mm (3.35") wide

P168-14M-85	29.37	745.87	29.47	748.66	—	168	171	J
P192-14M-85	33.58	852.82	33.69	855.62	—	192	205	J
P216-14M-85	37.79	959.78	37.90	962.57	—	216	219	J

\* 1-1/4" minimum plain bore, furnished less keyseat or setscrews. Maximum bore: 2-11/16"

### 14M-115 — Face Width = 5-1/4" For Belts 115mm (4.53") wide

P28-14M-115	4.81	122.12	4.91	124.78	5.56	28	20.7	SFQ
P29-14M-115	4.98	126.57	5.09	129.23	5.56	29	22.5	SFQ
P30-14M-115	5.16	130.99	5.26	133.69	6.09	30	10.9	EQ
P32-14M-115	5.51	139.88	5.61	142.60	6.09	32	14.6	EQ
P34-14M-115	5.86	148.79	5.97	151.52	6.50	34	17.9	EQ
P36-14M-115	6.21	157.68	6.32	160.43	6.87	36	17.2	FQ
P38-14M-115	6.56	166.60	6.67	169.34	7.22	38	19.9	FQ
P40-14M-115	6.91	175.49	7.02	178.25	7.50	40	23.7	FQ
P44-14M-115	7.61	193.28	7.72	196.08	8.34	44	25.2	E
P48-14M-115	8.31	211.11	8.42	213.90	8.90	48	33.2	E
P52-14M-115	9.01	228.85	9.12	231.73	9.68	52	46.9	F
P56-14M-115	9.72	246.76	9.82	249.55	10.38	56	51.2	F
P60-14M-115	11.20	282.41	10.53	267.38	11.68	64	74	F
P64-14M-115	11.12	246.76	11.23	285.21	11.68	64	77.8	J
P68-14M-115	11.82	300.23	11.93	303.03	12.50	68	88.6	J
P72-14M-115	12.52	318.06	12.63	320.86	13.19	72	96.7	J
P80-14M-115	13.93	353.71	14.04	356.51	14.63	80	84.8	J
P90-14M-115	15.68	398.28	15.79	401.07	—	90	73.3	J
P112-14M-115	19.54	496.32	19.65	499.11	—	112	100.5	J
P144-14M-115	25.15	638.92	25.26	641.71	—	144	143.5	J
P168-14M-115	29.37	745.87	29.47	748.66	—	168	170	M
P192-14M-115	33.58	852.82	33.69	855.62	—	192	220	M
P216-14M-115	37.79	959.78	37.90	962.57	—	216	263	M

\* 1-1/4" minimum plain bore, furnished less keyseat or setscrews. Maximum bore: 2-11/16"

### 14M-170 — Face Width = 7-3/8" For Belts 170mm (6.68") wide

P36-14M-170	6.21	157.68	6.32	160.43	6.87	36	43	FQ
P38-14M-170	6.56	166.60	6.67	169.34	7.22	38	50.8	FQ
P40-14M-170	6.91	175.49	7.02	178.25	7.50	40	57.5	FQ
P44-14M-170	7.61	193.28	7.72	196.08	8.34	44	32.3	FQ
P48-14M-170	9.72	246.76	9.83	249.55	10.38	56	63	FQ
P52-14M-170	9.01	228.85	9.12	231.75	9.68	52	57.7	F
P56-14M-170	9.72	246.76	9.83	249.55	10.38	56	66.5	F
P60-14M-170	11.20	282.41	11.23	285.21	11.68	64	80.9	J
P64-14M-170	11.12	282.41	11.23	285.21	11.68	64	87.9	J
P68-14M-170	11.82	300.23	11.93	303.06	12.50	68	103.1	J
P72-14M-170	12.52	318.06	12.63	320.86	13.19	72	112.2	J
P80-14M-170	13.93	353.71	14.04	356.51	14.63	80	103.9	J
P90-14M-170	15.68	398.28	15.79	401.07	—	90	88.2	J
P112-14M-170	19.54	496.32	19.65	499.11	—	112	171	M
P144-14M-170	25.15	638.92	25.26	641.71	—	144	234	M
P168-14M-170	29.37	745.87	29.48	748.66	—	168	258	M
P192-14M-170	33.58	852.82	33.69	855.62	—	192	317	M
P216-14M-170	37.79	959.78	37.90	962.57	—	216	348	M

\* 1-1/2" minimum plain bore, furnished less keyseat or setscrews. Maximum bore: P38-14M-170, 3-5/8", P40-14M-170, 3-3/4"

## RPP® Synchronous Sprockets

Part Number	Outside Diameter		Pitch Diameter		Flange Diameter (inch)	Number of Grooves	Weight less bushing (lbs.)	Bushing or **MPB
	(inch)	(mm)	(inch)	(mm)				

### 20M-115 — Face Width = 5-3/8" For Belts 115mm (4.53") wide

P34-20M-115	8.35	212.09	8.52	216.41	9.45	34	42.1	F
P36-20M-115	8.85	224.79	9.02	229.11	9.84	36	50.1	F
P38-20M-115	9.35	237.49	9.52	214.81	10.43	38	54.9	F
P40-20M-115	9.86	250.44	10.03	254.76	10.83	40	61	F
P44-20M-115	10.86	275.84	11.03	280.16	11.81	44	73.6	F
P48-20M-115	11.86	301.24	12.03	305.56	12.80	48	99.6	J
P52-20M-115	12.86	326.64	13.03	330.96	13.76	52	95.5	J
P56-20M-115	13.87	352.30	14.04	356.62	14.76	56	103.1	J
P60-20M-115	14.87	377.70	15.04	382.02	15.93	60	109.7	J
P64-20M-115	15.87	403.10	16.04	407.42	16.93	64	119.5	J
P68-20M-115	16.87	428.50	17.04	432.82	17.93	68	125.4	J
P72-20M-115	17.88	454.15	18.05	458.47	18.90	72	134.8	J
P80-20M-115	19.88	504.95	20.05	509.27	20.87	80	216.2	M
P90-20M-115	22.39	568.71	22.56	537.02	23.43	90	246.5	M
P112-20M-115	27.90	736.60	28.07	712.98	—	112	273.2	M
P144-20M-115	35.92	912.37	36.09	916.69	—	144	392.3	N
P168-20M-115	41.94	1064.77	42.11	1069.6	—	168	469	N
P192-20M-115	47.95	1217.93	48.12	1222.25	—	192	551.7	N
P216-20M-115	53.97	1370.84	54.14	1375.16	—	216	617.5	N

### 20M-170 — Face Width = 7-1/2" For Belts 170mm (6.69") wide

P34-20M-170	8.35	212.09	8.52	216.41	9.45	34	81.4	2-1/8"
P36-20M-170	8.85	224.79	9.02	229.11	9.84	36	92.6	2-1/8"
P38-20M-170	9.35	237.49	9.52	241.81	10.43	38	71.7	J
P40-20M-170	9.86	250.44	10.03	254.76	10.83	40	79.8	J
P44-20M-170	10.86	275.84	11.03	280.16	11.81	44	96.5	J
P48-20M-170	11.86	301.24	12.03	305.56	12.80	48	148	M
P52-20M-170	12.86	326.64	13.03	330.96	13.76	52	175.4	M
P56-20M-170	13.97	352.30	14.04	356.62	14.76	56	204.4	M
P60-20M-170	14.87	377.70	15.04	382.02	15.93	60	233.3	M
P64-20M-170	15.87	403.10	16.04	407.42	16.93	64	209.5	M
P68-20M-170	16.87	428.50	17.04	432.82	17.93	68	222	M
P72-20M-170	17.88	454.15	18.05	458.47	18.90	72	230.2	M
P80-20M-170	19.88	504.95	20.05	509.27	20.87	80	247.8	M
P90-20M-170	22.39	568.71	22.56	537.02	23.43	90	284.5	M
P112-20M-170	27.90	736.60	28.07	712.98	—	112	360.7	N
P144-20M-170	35.92	912.37	36.09	916.69	—	144	478.1	N
P168-20M-170	41.94	1064.77	42.11	1069.6	—	168	658.3	P
P192-20M-170	47.95	1217.93	48.12	1222.25	—	192	739.2	P
P216-20M-170	53.97	1370.84	54.14	1375.16	—	216	900.7	P

### 20M-230 — Face Width = 9-7/8" For Belts 230mm (9.06") wide

P38-20M-230	9.35	237.49	9.52	241.81	10.43	38	119.9	2-7/8"
P40-20M-230	9.86	250.44	10.03	254.76	10.83	40	146.8	2-7/8"
P44-20M-230	10.86	275.84	11.03	280.16	11.81	44	179.6	2-7/8"
P48-20M-230	11.86	301.24	12.03	305.56	12.80	48	163.6	M
P52-20M-230	12.86	326.64	13.03	330.96	13.76	52	193	M
P56-20M-230	13.97	352.30	14.04	356.62	14.46	56	223.6	M
P60-20M-230	14.87	377.70	15.04	382.02	15.93	60	251.8	M
P64-20M-230	15.87	403.10	16.04	407.42	16.93	64	232.8	M
P68-20M-230	16.87	428.50	17.04	432.82	17.93	68	375.3	N
P72-20M-230	17.88	454.15	18.05	458.47	18.90	72	338.8	N
P80-20M-230	19.88	504.95	20.05	509.27	20.87	80	331.3	N

## RPP® Synchronous Sprockets

Part Number	Outside Diameter		Pitch Diameter		Flange Diameter (inch)	Number of Grooves	Weight less bushing (lbs.)	Bushing or **MPB
	(inch)	(mm)	(inch)	(mm)				
<b>20M-230 — Face Width = 9-7/8" For Belts 230mm (9.06") wide</b>								
P90-20M-230	22.39	568.71	22.56	537.02	23.43	90	370.3	N
P112-20M-230	27.90	736.60	28.07	712.98	—	112	408.6	N
P144-20M-230	35.92	912.37	36.09	916.69	—	144	622.2	P
P168-20M-230	41.94	1064.77	42.11	1069.6	—	168	741.8	P
P192-20M-230	47.95	1217.93	48.12	1222.25	—	192	1111.2	W
P216-20M-230	53.97	1370.84	54.14	1375.16	—	216	1237.6	W
<b>20M-290 — Face Width = 12-1/4" For Belts 290mm (11.426") wide</b>								
P52-20M-290	12.86	326.64	13.03	330.96	13.76	52	238	N
P56-20M-290	13.87	352.30	14.04	356.62	14.76	56	275.1	N
P60-20M-290	14.87	377.70	15.04	382.02	15.93	60	309	N
P64-20M-290	15.87	403.10	16.04	407.42	16.93	64	350.8	N
P68-20M-290	16.87	428.50	17.04	432.82	17.93	68	397.3	N
P72-20M-290	17.88	454.15	18.05	458.47	18.90	72	362.3	N
P80-20M-290	19.88	504.95	20.05	509.27	20.87	80	365.7	N
P90-20M-290	22.39	568.71	22.56	537.02	23.43	90	411.1	N
P112-20M-290	27.90	736.60	28.07	712.98	—	112	600.9	P
P144-20M-290	35.92	912.37	36.09	916.69	—	144	725	P
P168-20M-290	41.94	1064.77	42.11	1069.6	—	168	1067.2	W
P192-20M-290	47.95	1217.93	48.12	1222.25	—	192	1236.4	W
P216-20M-290	53.97	1370.84	54.14	1375.16	—	216	1415.1	W
<b>20M-340 — Face Width = 14-1/4" For Belts 340mm (13.39") wide</b>								
P52-20M-340	12.86	326.64	13.03	330.96	13.76	52	252.8	N
P56-20M-340	13.87	352.30	14.04	356.62	14.76	56	291.2	N
P60-20M-340	14.87	377.70	15.04	382.02	15.93	60	324.5	N
P64-20M-340	15.87	403.10	16.04	407.42	16.93	64	367.5	N
P68-20M-340	16.87	428.50	17.04	432.82	17.93	68	415.9	N
P72-20M-340	17.88	454.15	18.05	458.47	18.90	72	382.1	N
P80-20M-340	19.88	504.95	20.05	509.27	20.87	80	494	P
P90-20M-340	22.39	568.71	22.56	537.02	23.43	90	513.2	P
P112-20M-340	27.90	736.60	28.07	712.98	—	112	630.7	P
P144-20M-340	35.92	912.37	36.09	916.69	—	144	989.6	W
P168-20M-340	41.94	1064.77	42.11	1069.6	—	168	1123.2	W
P192-20M-340	47.95	1217.93	48.12	1222.25	—	192	1710.9	S
P216-20M-340	53.97	1370.84	54.14	1375.16	—	216	1898.1	S

\*\*mpb = minimum plain bore