

Tension-Finder™

User Instructions

The Carlisle Tension-Finder can be used to tension individual belts or V-Bands.

The Tension-Finder should be used only with Carlisle belt lines listed in Table 1. The Tension-Finder should NOT be used with aramid cord or glass cord belts. Use with these belts could result in damage to equipment.

⚠ Warning!! Remove The Tension-Finder from the belt before starting the drive.

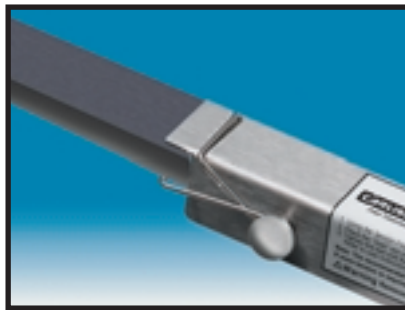
Procedure

Step 1: Install belts loosely on the drive.

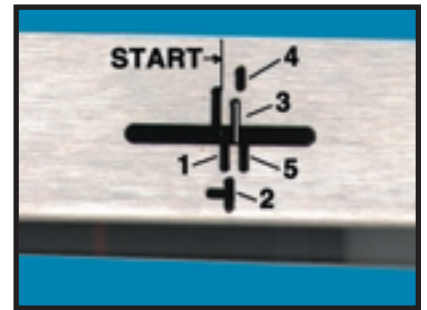
Step 2: Apply enough tension to take the slack out of the belts.



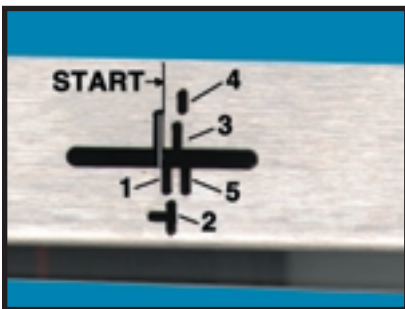
Step 3: Scribe a line on the belt using the Tension-Finder as a square. For cog belts see the special instructions on page 2.



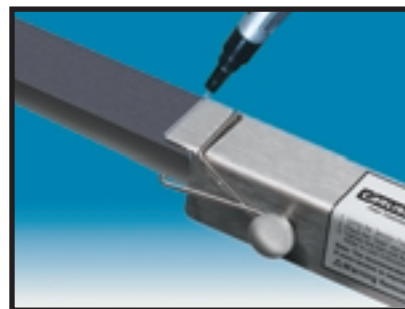
Step 5: With the line in the Start Slot attach the spring to the belt. Note: For cog belts the best place for the spring may be in a cog. See special instructions on page 2.



Step 7: Determine the required slot for your drive from Table 1. Tighten the belt until the line has moved to the designated slot. (In this picture the line is in Slot 3.)



Step 4: Place the Start Slot over the line.



Step 6: Scribe a line at the spring end of the Tension-Finder. Use this line as a reference point in case the spring slips off the belt.

Step 8: Remove the Tension-Finder from the belt, tighten mounting bolts, and replace belt guards. You're ready to start the drive!

Table 1: Recommended Tensioning Slots

Belt Lines	Slot No.	
	New Belt	Used Belt
AP, BP, CP, DP, RBP, RCP, RDP A, B, C AX, BX, CX, DX, RBX, RCX, RDX	2	1
R3V, R3VX 5V, 5VX, R5V, R5VX, R5VL 8V, 8VX, R8V, R8VX SPZX, SPAX, SPBX, SPCX	3	2

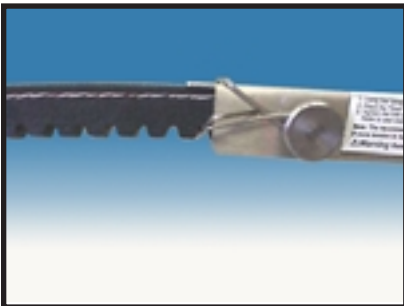
The recommended slot no's. in Table 1 will provide an adequate level of belt tension on average drives. If more tension is required go to a higher slot no. For less tension go to a lower slot no.

Note: Slots 4 and 5 on the Tension-Finder are provided for drives where the values in Table 1 do not provide adequate tension. Please consult Carlisle Application Engineering before tensioning a drive to these slots.

⚠ Warning!! Remove The Tension-Finder from the belt before starting the drive.

Special Instructions For Cog Belts

If the spring clip won't sit securely on the flat area between cogs take the following steps to scribe the line on the belt.



Place the spring in a cog groove.



Put a dot at the Start Slot. Be careful not to catch the pen in the slot--you may pull the tip out of the pen.



Scribe a line through the dot. The line should extend across the width of the Tension-Finder. Then go back to step 4 on page 1.



Power Transmission Products, Inc.

1 Prestige Place
Miamisburg, OH 45342
Phone: (866) 773-2926

